

Schools in Wales:
Examination Performance 2008

Ysgolion yng Nghymru:
Perfformiad mewn Arholiadau 2008



Contact points

Wales

For statistical enquiries contact the Statistical Directorate:

Tel: 029 2082 5050

E-mail: stats.info.desk@wales.gsi.gov.uk

Minicom: 029 2082 3280

Fax: 029 2082 5350

Address: Statistical Publication Unit,
Statistical Directorate,
Welsh Assembly Government,
Cathays Park,
CARDIFF, CF10 3NQ

You can also find Statistics for Wales on the internet

www.wales.gov.uk/statistics

United Kingdom

For statistical enquiries, contact the Office for National Statistics:

Tel: 0845 601 3034

Enquiries in Welsh: 01633 813381

Minicom: 01633 812399

E-mail: info@statistics.gov.uk

Fax: 01633 652747

Address: Customer Contact Centre,
Room 1.015,
Office for National Statistics,
Cardiff Road,
Newport,
NP10 8XG

You can also find National Statistics on the internet

www.statistics.gov.uk

A National Statistics publication

Official statistics bearing the National Statistics logo are produced to high professional standards set out in the National Statistics Code of Practice. They undergo regular quality assurance reviews to ensure that they meet customer needs. They are produced free from any political interference.

Pwyntiau cysylltu

Cymru

Yn achos ymholiadau am ystadegau cysylltwch â'r Gyfarwyddiaeth Ystadegol:

Ffôn: 029 2080 1440

E-bost: stats.info.desk@wales.gsi.gov.uk

Minicom: 029 2082 3280

Ffacs: 029 2082 5350

Cyfeiriad: Uned Cyhoeddiadau Ystadegol
Y Gyfarwyddiaeth Ystadegol,
Llywodraeth Cynulliad Cymru,
Parc Cathays
CAERDYDD, CF10 3NQ

Gallwch ddod o hyd i Ystadegau ar gyfer Cymru ar y rhyngwyd

www.cymru.gov.uk/ystadegau

Y Deyrnas Unedig

Yn achos ymholiadau ystadegol, cysylltwch â'r Swyddfa Ystadegau Gwladol

Ffôn: 0845 601 3034

Ymholiadau yng Nghymraeg:

01633 813381

Minicom: 01633 812399

E-bost: info@statistics.gov.uk

Ffacs: 01633 652747

Cyfeiriad: Canolfan Cysylltiad Cwsmer,
Ystafell 1.015,
Swyddfa Ystadegau Gwladol,
Ffordd Caerdydd,
Casnewydd, NP10 8XG

Gallwch hefyd ddod o hyd i Ystadegau Gwladol ar y rhyngwyd

www.statistics.gov.uk

Cyhoeddiad Ystadegau Gwladol

Cynhyrchir ystadegau swyddogol sy'n dwyn logo Ystadegau Gwladol i safonau proffesiynol uchel a nodir yng Nghod Ymarfer Ystadegau Gwladol. Maent yn cael eu hadolygu yn rheolaidd o safbwynt sicrwydd ansawdd er mwyn sicrhau eu bod yn diwallu anghenion y cwsmer. Fe'u cynhyrchir yn rhydd rhag unrhyw ymyrraeth wleidyddol.

© Crown copyright 2009
First published 2009

ISBN 978 0 7504 5159 8

Welsh Assembly Government

E0470910

Brief extracts from this publication, with the exception of maps, may be reproduced providing the source is fully acknowledged. Proposals for reproductions of maps and larger extracts should be addressed to

The Copyright Unit,
Her Majesty's Stationery Office,
St Clements House,
2-16 Colegate,
Norwich,
NR3 1BQ

The maps are based upon the Ordnance Survey map by the National Assembly for Wales with the permission of Ordnance Survey on behalf of The Controller of Her Majesty's Stationery Office, © Crown copyright. All rights reserved. Unauthorised reproduction infringes Crown copyright and may lead to prosecution or civil proceedings. Licence Number GD272221.

For enquiries about this publication, contact
Tel: 029 2082 5514
E-mail: school.stats@wales.gsi.gov.uk

To order additional copies of this publication, call Statistical Publication Unit on 029 2082 5054.

© Hawlfraint y Goron 2009
Cyhoeddwyd gyntaf 2009

ISBN 978 0 7504 5159 8

Llywodraeth Cynulliad Cymru

E0470910

Gellir dyblygu darnau byr o'r cyhoeddiad hwn, ac eithrio mapiau ar yr amod y cydnabyddir y ffynhonnell yn llawn. Dylid cyfeirio ceisiadau am ddyblygu mapiau a darnau hirach at

Yr Uned Hawlfraint,
Gwasg Ei Mawrhydi,
St Clements House,
2-16 Colegate,
Norwich,
NR3 1BQ

Seilir y map hwn ar fap Arolwg Ordnans Cynulliad Cenedlaethol Cymru gyda chaniatâd yr Arolwg Ordnans ar ran Rheolwr Llyfrfa ei Mawrhydi, © Hawlfraint y Goron. Cedwir pob hawl. Byddai ei atgynhyrchu heb ganiatâd yn torri'r Hawlfraint y Goron a gallai arwain at eich erlyn neu ddwyn achos sifil yn eich erbyn. Rhif Trwydded GD272221.

Yn achos ymholiadau am y cyhoeddiad hwn, cysylltwch â'r
Ffôn: 029 2082 5514
E-bost: school.stats@wales.gsi.gov.uk

I archebu copïau ychwanegol o'r cyhoeddiad hwn, galwch yr Uned Cyhoeddiadau Ystadegol ar 029 2082 5054.

Introduction

"Schools in Wales: Examination Performance" contains information on the examination performance of pupils in schools in Wales. More general school statistics are found in the complementary volume "Schools in Wales: General Statistics". Only information on the schools sector is presented in this volume: figures relating to further and higher education are available separately. This volume contains both historic national statistics, statistics for individual local education authorities and some Wales and England comparisons.

The statistics in this volume are mainly based on returns made to the Welsh Assembly Government by all schools in Wales, or from secondary school examination performance information. General notes on the sources of data are given in the glossary.

Ages relate to pupils' age as at 31 August prior to the **start** of the academic year. Note that in "Schools in Wales: Examination Performance 2001" the ages were referred to as at the **end** of the academic year.

Rounding: In tables where figures have been rounded to the nearest final digit there may be an apparent slight discrepancy between the sum of the constituent items and the total as shown.

Symbols. The following symbols have been used throughout the publication:

- .. not available
- . not applicable
- nil or less than half the final digit shown
- * figure is less than five or cannot be given for reasons of confidentiality.

Compilation of statistics:
Martin Parry, Steve Foulkes, Jenny Humphreys and Matthew Wellington.

Enquiries relating to any of the tables contained in this publication may be directed to:

School Statistics
Welsh Assembly Government
Cathays Park
CARDIFF
CF10 3NQ
Tel: 029 2082 5514
e-mail: school.stats@wales.gsi.gov.uk

Rhagarweiniad

Mae "Ysgolion yng Nghymru: Perfformiad mewn Arholiadau" yn cynnwys gwybodaeth am berfformiad disgyblion yn ysgolion Cymru mewn arholiadau. Gellir gweld ystadegau mwy cyffredinol am ysgolion yn y gyfrol gydategol "Ysgolion yng Nghymru: Ystadegau Cyffredinol". Gwybodaeth am y sector ysgolion yn unig a roddir yn y gyfrol hon: cyhoeddir ffigurau sy'n ymwneud ag addysg bellach ac uwch ar wahân. Mae'r gyfrol hon yn cynnwys ystadegau cenedlaethol hanesyddol, ystadegau am awdurdodau addysg lleol unigol a rhai cymariaethau rhwng Cymru a Lloegr.

Mae'r ystadegau yn y gyfrol hon wedi'u seilio'n bennaf naill ai ar wybodaeth a roddwyd i Lywodraeth Cynulliad Cymru gan holl ysgolion Cymru, neu o wybodaeth perfformiad arholiadau ysgolion uwchradd. Rhoddir nodiadau cyffredinol ar ffynonellau'r data yn yr Eirfa.

Oedrannau ar 31 Awst cyn **dechrau'r** flwyddyn academaidd. Nodir mai oedrannau ar **ddiwedd** y flwyddyn academaidd a ddefnyddiwyd yn "Ysgolion yng Nghymru: Perfformiad mewn Arholiadau 2001".

Talgrynnu: Mewn tablau lle mae'r ffigurau wedi'u gwneud yn rhai crynion hyd y ffigur terfynol agosaf, hwyrach y gwelir rhywfaint o anghysondeb rhwng swm yr eitemau unigol a'r cyfanswm a ddangosir.

Symbolau. Defnyddir y symbolau canlynol drwy'r cyhoeddiad:

- .. ddim ar gael
- . ddim yn gymwys
- dim neu lai na hanner y digid terfynol a ddangosir
- * mae'r ffigwr yn llai na phump neu ni ellir eu cynnwys gan eu bod yn gyfrinachol

Casglu ystadegau:
Martin Parry, Steve Foulkes, Jenny Humphreys and Matthew Wellington.

Gellir cyfeirio ymholiadau ynglŷn ag unrhyw rai o'r tablau a gynhwysir yn y cyhoeddiad hwn at:
Ystadegau Ysgolion
Llywodraeth Cynulliad Cymru
Parc Cathays
CAERDYDD
CF10 3NQ
Ffôn: 029 2082 5514
e-bost: school.stats@wales.gsi.gov.uk

CONTENTS

1 NATIONAL CURRICULUM ASSESSMENTS: GENERAL INFORMATION

1.1	Key Stage 1 teacher assessment results, 1999-2008 (selected years).....	4
1.2	Key Stage 1 teacher assessment results, by attainment targets, 2008.....	6
1.3	Key Stage 2 teacher assessment results, 1999-2008 (selected years).....	8
1.4	Key Stage 2 teacher assessment results, by attainment targets, 2008.....	10
1.5	Key Stage 3 teacher assessment results, 1999-2008 (selected years).....	12
1.6	Key Stage 3 teacher assessment results in the non core subjects, 2003-2008 (selected years).....	14

2 PUBLIC EXAMINATIONS: GENERAL INFORMATION

2.1	Examination achievements of pupils aged 15.....	18
2.2	Examination achievements of pupils aged 17.....	20
2.3	Entry Level Qualifications : entries and results.....	21
2.4	GCSE short course : entries and results by subject group, 2007/08.....	22
2.5	GCSE : entries and results (pupils aged 15 only) by subject group, 2007/08.....	24
2.6	GCSE : entries and results by medium of examination (pupils aged 15 only), 2007/08 ...	30
2.7	GCSE: Welsh Medium entries by subject (pupils aged 15 only), 2007/08.....	31
2.8	AS level : entries and results by subject group, 2007/08.....	32
2.9	A level : entries and results by subject group, 2007/08.....	35

3 NATIONAL CURRICULUM ASSESSMENTS: LEA INFORMATION

3.1	Key Stage 1 teacher assessment results, by LEA, 2008.....	42
3.2	Key Stage 2 teacher assessment results, by LEA, 2008.....	43
3.3	Key Stage 3 teacher assessment results, by LEA, 2008.....	44
3.4	Key Stage 3 teacher assessment results in the non core subjects, by LEA, 2008.....	46

4 PUBLIC EXAMINATIONS: LEA INFORMATION

4.1	Examination entries and achievements of pupils aged 15, by LEA, comparison with England, 2007/08.....	52
4.2	Examination entries and achievements of pupils aged 17, by LEA, 2007/08.....	58

	GLOSSARY.....	67
--	---------------	----

1	ASESIADAU'R CWRICWLWM CENEDLAETHOL: GWYBODAETH GYFFREDINOL	
1.1	Canlyniadau asesiadau athrawon Cyfnod Allweddol 1, 1999-2008 (blynyddoedd penodedig)	4
1.2	Canlyniadau asesiadau athrawon Cyfnod Allweddol 1, yn ôl targedau cyrhaeddiad, 2008	6
1.3	Canlyniadau asesiadau athrawon Cyfnod Allweddol 2, 1999-2008 (blynyddoedd penodedig)	8
1.4	Canlyniadau asesiadau athrawon Cyfnod Allweddol 2, yn ôl targedau cyrhaeddiad, 2008	10
1.5	Canlyniadau asesiadau athrawon Cyfnod Allweddol 3, 1999-2008 (blynyddoedd penodedig)	12
1.6	Canlyniadau asesiadau athrawon Cyfnod Allweddol 3 yn y pynciau di-graidd, 2003-2008 (blynyddoedd penodedig).....	14
2	ARHOLIADAU CYHOEDDUS: GWYBODAETH GYFFREDINOL	
2.1	Cyraeddiadau arholiadau disgyblion 15 oed	18
2.2	Cyraeddiadau arholiadau disgyblion 17 oed	20
2.3	Cymwysterau Lefel Mynediad: cofrestriadau a chanlyniadau	21
2.4	TGAU cwrs byr: cofrestriadau a chanlyniadau yn ôl grŵp pwnc, 2007/08	22
2.5	TGAU: cofrestriadau a chanlyniadau (disgyblion 15 oed yn unig) yn ôl grŵp pwnc, 2007/08.....	24
2.6	TGAU: cofrestriadau a chanlyniadau yn ôl cyfrwng yr arholiad (disgyblion 15 oed yn unig), 2007/08	30
2.7	TGAU: cofrestriadau cyfrwng Cymraeg fesul pwnc (disgyblion 15 oed yn unig), 2007/08	31
2.8	Safon Uwch Atodol: cofrestriadau a chanlyniadau yn ôl grŵp pwnc, 2007/08.....	32
2.9	Safon Uwch : cofrestriadau a chanlyniadau yn ôl grŵp pwnc, 2007/08.....	35
3	ASESIADAU'R CWRICWLWM CENEDLAETHOL:GWYBODAETH AALI	
3.1	Canlyniadau asesiadau athrawon Cyfnod Allweddol 1, yn ôl AALI, 2008	42
3.2	Canlyniadau asesiadau athrawon Cyfnod Allweddol 2, yn ôl AALI, 2008	43
3.3	Canlyniadau asesiadau athrawon Cyfnod Allweddol 3, yn ôl AALI, 2008	44
3.4	Canlyniadau asesiadau athrawon Cyfnod Allweddol 3 yn y pynciau di-graidd, yn ôl AALI, 2008	46
4	ARHOLIADAU CYHOEDDUS: GWYBODAETH AALI	
4.1	Cofrestriadau a cyraeddiadau arholiad disgyblion 15 oed, yn ôl AALI a chymharu gyda Lloegr, 2007/08	52
4.2	Cofrestriadau a cyraeddiadau arholiad disgyblion 17 oed, yn ôl AALI, 2007/08.....	58
	GEIRFA	67

National Curriculum Assessments

The data contained in these tables present the teacher assessment results of pupils taught to National Curriculum standards for the Key Stages 1, 2 and 3. Pupils are assessed in the subjects of English, Welsh (first language), Mathematics and Science. For Key Stage 3 results of assessments in the non core subjects are also included.

Since 2002 in Wales statutory assessment at the end of Key Stage 1 has been by means of Teacher Assessment only. Following the outcome of the Daugherty Assessment Review Group in 2004, Key Stage 2 tasks/tests were made optional in 2005 and Key Stage 3 tasks/tests were made optional in 2006. Only results for teacher assessments appear in this publication.

The results published are taken from returns submitted by schools and Local Education Authorities (LEAs). All maintained schools and those independent schools that submitted their results are included. 2008 data for each Local Education Authority is shown in chapter 3. Historical Tables 1.1, 1.3, 1.5 and 1.6 do not include data for the years 2000 and 2001 – for this data, see previous years' publications.

For further details see the Glossary.

Asesiadau'r Cwricwlwm Cenedlaethol

Mae'r data a gynhwysir yn y tablau hyn yn cyflwyno canlyniadau asesiadau athrawon disgyblion a addysgir i safonau'r Cwricwlwm Cenedlaethol ar gyfer Cyfnodau Allweddol 1, 2 a 3. Aesir disgyblion yn y pynciau canlynol, sef Saesneg, Cymraeg (iaith gyntaf), Mathemateg a Gwyddoniaeth. Ar gyfer Cyfnod Allweddol 3, mae canlyniadau asesiadau athrawon yn y pynciau di-graidd hefyd wedi'u cynnwys.

Ers 2002, asesiadau athrawon yw'r unig asesiadau statudol ar gyfer Cyfnod Allweddol 1 yng Nghymru. Yn dilyn canlyniadau Grŵp Adolygu Asesiadau Daugherty, gwnaed profi yng Nghyfnod Allweddol 2 yn opsiynol yng Nghymru yn 2005, a phrofi yng Nghyfnod Allweddol 3 yn opsiynol yng Nghymru yn 2006. Canlyniadau asesiadau athrawon yn unig sy'n ymddangos yn y cyhoeddiad hwn.

Mae'r canlyniadau wedi'u codi o wybodaeth a gyflwynwyd gan ysgolion ac Awdurdodau Addysg Lleol (AAL). Cynhwysir pob ysgol a gynhelir ac felly hefyd yr ysgolion annibynnol a gyflwynodd eu canlyniadau. Dangosir data 2008 ar gyfer Awdurdodau Addysg Lleol ym mhennod 3. Nid yw Tablau hanesyddol 1.1, 1.3, 1.5 nac 1.6 yn cynnwys data ar gyfer y blynyddoedd 2000 a 2001 – ar gyfer y data hwn, gweler cyhoeddiadau y blynyddoedd blaenorol.

I gael manylion pellach gweler yr Eirfa.

NATIONAL CURRICULUM ASSESSMENTS: GENERAL INFORMATION
 ASESIAU'R CWRICWLWM CENEDLAETHOL: GWYBODAETH GYFFREDINOL

1.1 Key Stage 1 teacher assessment results, 1999-2008 (selected years) (a)

Per cent

	Level of attainment (b) Lefel cyrhaeddiad (b)				
	D	N (c)	W	1	2
English:					
1999	0	-	3	15	64
2002	0	-	4	13	63
2003	0	-	4	14	63
2004	0	-	4	13	63
2005	-	-	4	12	64
2006	-	-	3	13	63
2007	-	-	3	14	63
2008	-	-	3	14	63
Welsh:					
1999	0	-	1	12	66
2002	0	-	2	11	63
2003	0	1	1	11	64
2004	0	1	2	10	63
2005	-	-	2	8	64
2006	-	-	1	10	63
2007	-	-	2	10	63
2008	-	-	1	10	64
Mathematics:					
1999	0	-	2	12	66
2002	0	-	2	9	61
2003	0	-	2	11	63
2004	-	-	2	10	63
2005	-	-	2	10	63
2006	-	-	2	10	64
2007	-	-	2	11	65
2008	-	-	2	11	65
Science:					
1999	0	-	2	12	71
2002	0	-	2	10	68
2003	0	-	2	10	66
2004	0	-	2	10	65
2005	-	-	2	9	65
2006	-	-	2	9	65
2007	-	-	1	9	66
2008	-	-	2	8	66
Core Subject Indicator :					
1999
2002
2003
2004
2005
2006
2007
2008

(a) See table 1.2 for attainment target data, and table 3.1 for LEA data.

Since 2002, statutory assessment in Wales at the end of Key Stage 1 has been by means of teacher assessment only.

(b) D - Excepted or disapplied under Sections 113-116 of the 2002 Education Act.

N - Not awarded a level for reasons other than disapplication.

W - Working towards Level 1.

For further details see the Glossary.

(c) In 2005, some pupils were allocated level A (absent). This level was valid for this year only, and these pupils have been included under level N in this table.

NATIONAL CURRICULUM ASSESSMENTS: GENERAL INFORMATION
 ASESIAU'R CWRICWLWM CENEDLAETHOL: GWYBODAETH GYFFREDINOL

Canlyniadau asesiadau athrawon Cyfnod Allweddol 1, 1999-2008 (blynyddoedd penodedig) (a)

Canran

Level of attainment (b) Lefel cyrhaeddiad (b)		Achieving expected level (Level 2+) Cyrhaedd y lefel disgwyliedig (Lefel 2+)	Number of entries Nifer y cofrestrïadau	
3	4+			
17	-	81	30,885	Saesneg: 1999
20	-	83	28,256	2002
20	-	82	27,907	2003
20	-	83	28,687	2004
20	-	84	27,121	2005
20	-	83	26,401	2006
20	-	82	25,183	2007
19	-	82	24,592	2008
21	0	87	6,870	Cymraeg: 1999
24	0	87	6,563	2002
23	-	87	6,538	2003
25	0	88	6,919	2004
26	-	90	6,621	2005
25	0	89	6,599	2006
26	0	88	6,428	2007
24	-	89	6,524	2008
19	-	85	37,726	Mathemateg: 1999
26	-	88	34,819	2002
24	-	87	34,445	2003
24	-	87	35,607	2004
24	-	87	33,750	2005
23	-	87	33,000	2006
22	-	87	31,611	2007
22	-	87	31,116	2008
15	-	86	37,727	Gwyddoniaeth: 1999
20	0	88	34,819	2002
22	0	88	34,444	2003
23	-	89	35,607	2004
24	-	89	33,750	2005
24	-	89	33,000	2006
24	-	89	31,611	2007
23	0	90	31,116	2008
.	.	78	37,778	Dangosydd Pynciau Craidd: 1999
.	.	80	34,853	2002
.	.	79	34,446	2003
.	.	80	35,612	2004
.	.	81	33,750	2005
.	.	81	33,000	2006
.	.	80	31,611	2007
.	.	81	31,116	2008

(a) Gweler tabl 1.2 am ddata targedau cyrhaeddiad, a thabl 3.1 am ddata AALI.

Ers 2002, Aseiad Athrawon yw'r unig aseiad statudol ar gyfer Cyfnod Allweddol 1 yng Nghymru.

(b) D - Datgymhwyswyd o dan Adrannau 113-116 o Ddeddf Addysg 2002.

N - Ni ddyfarnwyd lefel am resymau heblaw datgymhwyso.

W - Gweithio tuag at Lefel 1.

Am ragor o fanylion gweler yr Eirfa.

(c) Yn 2005, dyfarnwyd lefel A (absennol) i rhai disgyblion. Roedd y lefel yma yn ddilys ar gyfer 2005 yn unig, ac mae'r disgyblion wedi eu cynnwys o dan lefel N yn y tabl yma.

NATIONAL CURRICULUM ASSESSMENTS: GENERAL INFORMATION
 ASESIAU'R CWRICWLWM CENEDLAETHOL: GWYBODAETH GYFFREDINOL

1.2 Key Stage 1 teacher assessment results, by attainment targets, 2008 (a)

Per cent

	Level of attainment (b) Lefel cyrhaeddiad (b)				
	D	N	W	1	2
English:	-	-	3	14	63
Oracy	-	-	2	11	63
Reading	-	-	4	15	55
Writing	-	-	5	16	68
Welsh:	-	-	1	10	64
Oracy	-	-	1	10	65
Reading	-	-	2	16	60
Writing	-	-	3	20	66
Mathematics:	-	-	2	11	65
Using and Applying Mathematics	-	-	3	16	65
Numbers and Algebra	-	-	2	12	65
Shape, Space and Measures	-	-	2	11	67
Science:	-	-	2	8	66
Scientific Enquiry	-	-	2	13	65
Life Processes and Living Things	-	-	1	7	64
Materials and their Properties	-	-	2	8	67
Physical Processes	-	-	2	9	66
Core Subject Indicator
Reading & Writing and Mathematics
Reading & Writing, Mathematics and Science

(a) See table 1.1 for historical data, and table 3.1 for LEA data.

Since 2002, statutory assessment in Wales at the end of Key Stage 1 has been by means of teacher assessment only.

(b) D - Excepted or disapplied under Sections 113-116 of the 2002 Education Act.

N - Not awarded a level for reasons other than disapplication.

W - Working towards Level 1.

For further details see the Glossary.

NATIONAL CURRICULUM ASSESSMENTS: GENERAL INFORMATION
 ASESIADAU'R CWRICWLWM CENEDLAETHOL: GWYBODAETH GYFFREDINOL

**Canlyniadau asesiadau athrawon Cyfnod Allweddol 1,
 yn ôl targedau cyrhaeddiad, 2008 (a)**

Canran

Level of attainment (b) Lefel cyrhaeddiad (b)		Achieving expected level (Level 2+) Cyrhaedd y lefel disgwylidig (Lefel 2+)	Number of entries Nifer y cofrestrïadau	
3	4+			
19	-	82	24,592	Saesneg:
24	-	87	24,592	Llafaredd
25	-	81	24,592	Darllen
11	-	79	24,592	Ysgrifennu
24	-	89	6,524	Cymraeg:
23	-	88	6,524	Llafaredd
21	-	81	6,524	Darllen
11	-	77	6,524	Ysgrifennu
22	-	87	31,116	Mathemateg:
17	-	81	31,116	Defnyddio a Chymwysio Mathemateg
21	-	86	31,116	Rhif ac Algebra
20	-	87	31,116	Siâp, Gofod a Mesurau
23	0	90	31,116	Gwyddoniaeth:
20	0	85	31,116	Ymholiad Gwyddonol
28	0	92	31,116	Prosesau Bywyd a Phethau Byw
23	0	90	31,116	Defnyddiau a'u Priodweddau
22	-	89	31,116	Prosesau Ffisegol
.	.	81	31,116	Dangosydd Pynciau Craidd
.	.	75	31,116	Darllen ac Ysgrifennu a Mathemateg
.	.	74	31,116	Darllen ac Ysgrifennu, Mathemateg a Gwyddoniaeth

(a) Gweler tabl 1.1 am ddata hanesyddol, a thabl 3.1 am ddata AALI.

Ers 2002, Aseiad Athrawon yw'r unig aseiad statudol ar gyfer Cyfnod Allweddol 1 yng Nghymru.

(b) D - Datgymhwyswyd o dan Adrannau 113-116 o Ddeddf Addysg 2002.

N - Ni ddyfarnwyd lefel am resymau heblaw datgymhwyso.

W - Gweithio tuag at Lefel 1.

Am ragor o fanylion gweler yr Eirfa.

NATIONAL CURRICULUM ASSESSMENTS: GENERAL INFORMATION
 ASESIAU'R CWRICWLWM CENEDLAETHOL: GWYBODAETH GYFFREDINOL

1.3 Key Stage 2 teacher assessment results, 1999-2008 (selected years) (a)

Per cent

	Level of attainment (b)					
	Lefel cyrhaeddiad (b)					
	D	N (c)	W	1	2	3
English:						
1999	-	1	-	1	7	24
2002	-	1	-	1	6	17
2003	-	-	-	1	6	16
2004	-	-	-	1	5	16
2005	-	-	-	1	4	15
2006	-	-	-	1	4	16
2007	-	-	-	1	4	16
2008	-	-	1	1	3	16
Welsh:						
1999	2	1	-	1	6	27
2002	1	-	-	1	4	19
2003	1	-	1	1	4	18
2004	1	1	-	1	3	17
2005	1	-	-	1	5	17
2006	1	-	1	1	4	18
2007	1	1	1	1	5	19
2008	-	-	1	1	4	17
Mathematics:						
1999	-	1	-	1	5	23
2002	-	1	-	1	4	19
2003	-	-	-	-	4	19
2004	-	-	-	-	3	17
2005	-	-	-	1	3	15
2006	-	-	-	-	3	14
2007	-	-	-	1	3	15
2008	-	-	-	1	3	15
Science:						
1999	-	1	-	1	5	18
2002	-	1	-	-	2	13
2003	-	-	-	-	2	13
2004	-	-	-	-	1	11
2005	-	-	-	-	2	11
2006	-	-	-	-	2	11
2007	-	-	-	-	2	12
2008	-	-	-	-	2	11
Core Subject Indicator :						
1999
2002
2003
2004
2005
2006
2007
2008

(a) See table 1.4 for attainment target data, and table 3.2 for LEA data.

Since 2005, statutory assessment in Wales at the end of Key Stage 2 has been by means of teacher assessment only.

(b) D - Excepted or disapplied under Sections 113-116 of the 2002 Education Act.

N - Not awarded a level for reasons other than disapplication.

W - Working towards Level 1.

For further details see the Glossary.

(c) Before 2006, A (absent) was a valid level at Key Stage 2. Pupils achieving this level have been included under level N in this table.

NATIONAL CURRICULUM ASSESSMENTS: GENERAL INFORMATION
 ASESIAU'R CWRICWLWM CENEDLAETHOL: GWYBODAETH GYFFREDINOL

Canlyniadau asesiadau athrawon Cyfnod Allweddol 2, 1999-2008 (blynyddoedd penodedig) (a)

Canran

Level of attainment (b) Lefel cyrhaeddiad (b)			Achieving expected level (Level 4+)	Number of entries	
4	5	6+	Cyrraedd y lefel disgwyliedig (Lefel 4+)	Nifer y cofrestrïadau	
					Saesneg:
48	19	-	67	39,180	1999
46	30	-	76	38,954	2002
45	31	-	76	38,521	2003
46	30	-	77	37,035	2004
47	32	-	79	35,980	2005
48	30	-	79	35,350	2006
50	29	-	79	34,900	2007
51	28	-	80	36,125	2008
					Cymraeg:
47	16	-	63	6,892	1999
50	23	-	74	6,815	2002
51	25	-	76	6,961	2003
49	28	-	77	6,622	2004
50	26	-	76	6,858	2005
50	25	0	75	6,808	2006
49	24	-	73	6,812	2007
53	24	-	77	7,152	2008
					Mathemateg:
47	21	-	69	39,180	1999
47	28	-	75	38,960	2002
46	30	-	76	38,522	2003
46	31	-	78	37,042	2004
48	32	-	80	36,016	2005
47	33	-	81	35,350	2006
50	30	-	80	34,900	2007
51	30	-	81	36,125	2008
					Gwyddoniaeth:
50	25	-	75	39,182	1999
50	33	-	83	38,957	2002
49	35	-	84	38,536	2003
50	36	-	86	37,058	2004
52	35	0	87	36,019	2005
52	34	-	86	35,350	2006
52	32	-	85	34,900	2007
54	32	-	86	36,125	2008
					Dangosydd Pynciau Craidd:
.	.	.	61	39,189	1999
.	.	.	70	38,963	2002
.	.	.	71	38,545	2003
.	.	.	72	37,065	2004
.	.	.	74	36,024	2005
.	.	.	74	35,350	2006
.	.	.	74	34,900	2007
.	.	.	75	36,125	2008

(a) Gweler tabl 1.4 am ddata targedau cyrhaeddiad, a thabl 3.2 am ddata AALI.

Ers 2005, Asesiad Athrawon yw'r unig asesiad statudol ar gyfer Cyfnod Allweddol 2 yng Nghymru.

(b) D - Datgymhwyswyd o dan Adrannau 113-116 o Ddeddf Addysg 2002.

N - Ni ddyfarnwyd lefel am resymau heblaw datgymhwysyo.

W - Gweithio tuag at Lefel 1.

Am ragor o fanylion gweler yr Eirfa.

(c) Cyn 2006, roedd lefel A (absennol) yn lefel dilys ar gyfer Cyfnod Allweddol 2. Mae disgyblion a enillodd y lefel yma wedi'u cynnwys o dan lefel N yn y tabl yma.

NATIONAL CURRICULUM ASSESSMENTS: GENERAL INFORMATION
 ASESIAU'R CWRICWLWM CENEDLAETHOL: GWYBODAETH GYFFREDINOL

1.4 Key Stage 2 teacher assessment results, by attainment targets, 2008 (a)

Per cent

	Level of attainment (b)					
	Lefel cyrhaeddiad (b)					
	D	N	W	1	2	3
English:	-	-	1	1	3	16
Oracy	-	-	1	1	3	15
Reading	-	-	1	1	3	15
Writing	-	-	1	1	4	21
Welsh:	-	-	1	1	4	17
Oracy	-	-	1	1	4	14
Reading	-	-	1	1	4	17
Writing	-	-	1	1	6	24
Mathematics:	-	-	-	1	3	15
Using and Applying Mathematics	-	-	1	1	4	22
Numbers and Algebra	-	-	-	1	3	15
Shape, Space and Measures	-	-	1	1	3	14
Handling Data	-	-	1	1	3	16
Science:	-	-	-	-	2	11
Scientific Enquiry	-	-	1	1	3	17
Life Processes and Living Things	-	-	-	-	2	11
Materials and their Properties	-	-	-	-	2	12
Physical Processes	-	-	1	-	2	13
Core Subject Indicator
Reading & Writing and Mathematics
Reading & Writing, Mathematics and Science

(a) See table 1.3 for historical data, and table 3.2 for LEA data.

Since 2005, statutory assessment in Wales at the end of Key Stage 2 has been by means of teacher assessment only.

(b) D - Excepted or disapplied under Sections 113-116 of the 2002 Education Act.

N - Not awarded a level for reasons other than disapplication.

W - Working towards Level 1.

For further details see the Glossary.

NATIONAL CURRICULUM ASSESSMENTS: GENERAL INFORMATION
 ASESIAU'R CWRICWLWM CENEDLAETHOL: GWYBODAETH GYFFREDINOL

**Canlyniadau asesiadau athrawon Cyfnod Allweddol 2, yn ôl targedau
 cyrhaeddiad, 2008 (a)**

Canran

Level of attainment (b) Lefel cyrhaeddiad (b)			Achieving expected level (Level 4+)	Number of entries	
4	5	6+	Cyrraedd y lefel disgwyliedig (Lefel 4+)	Nifer y cofrestrïadau	
51	28	-	80	36,125	Saesneg:
51	30	-	81	36,125	Llafaredd
48	32	-	80	36,125	Darllen
50	23	-	73	36,125	Ysgrifennu
53	24	-	77	7,152	Cymraeg:
53	27	-	80	7,152	Llafaredd
50	27	0	77	7,152	Darllen
51	17	-	68	7,152	Ysgrifennu
51	30	-	81	36,125	Mathemateg:
48	24	-	73	36,125	Defnyddio a Chymwhyso Mathemateg
49	31	-	81	36,125	Rhif ac Algebra
52	29	-	82	36,125	Siâp, Gofod a Mesurau
51	29	-	80	36,125	Trafod Data
54	32	-	86	36,125	Gwyddoniaeth:
51	28	-	80	36,125	Ymholiad Gwyddonol
52	34	-	87	36,125	Prosesau Bywyd a Phethau Byw
53	31	-	85	36,125	Defnyddiau a'u Priodweddau
54	30	0	84	36,125	Prosesau Ffisegol
.	.	.	75	36,125	Dangosydd Pynciau Craidd
.	.	.	69	36,125	Darllen ac Ysgrifennu a Mathemateg
.	.	.	69	36,125	Darllen ac Ysgrifennu, Mathemateg a Gwyddoniaeth

(a) Gweler tabl 1.3 am ddata hanesyddol, a thabl 3.2 am ddata AALI.

Ers 2005, Aseiad Athrawon yw'r unig aseiad statudol ar gyfer Cyfnod Allweddol 2 yng Nghymru.

(b) D - Datgymhwyswyd o dan Adrannau 113-116 o Ddeddf Addysg 2002.

N - Ni ddyfarnwyd lefel am resymau heblaw datgymhwyso.

W - Gweithio tuag at Lefel 1.

Am ragor o fanylion gweler yr Eirfa.

NATIONAL CURRICULUM ASSESSMENTS: GENERAL INFORMATION
 ASESIAU'R CWRICWLWM CENEDLAETHOL: GWYBODAETH GYFFREDINOL

1.5 Key Stage 3 teacher assessment results, 1999-2008 (selected years) (a)

Per cent

	Level of attainment (b) Lefel cyrhaeddiad (b)						
	D	N (c)	W	1	2	3	4
English:							
1999	-	2	-	1	3	10	22
2002	-	1	-	-	2	9	22
2003	-	2	-	-	2	9	22
2004	-	1	-	-	2	8	21
2005	-	2	-	-	2	8	21
2006	-	1	-	-	1	7	22
2007	-	1	-	-	1	7	21
2008	-	1	1	-	1	6	21
Welsh:							
1999	-	1	-	-	1	8	19
2002	-	1	-	-	1	7	20
2003	-	-	-	-	1	6	19
2004	-	1	0	-	-	6	19
2005	-	1	0	-	1	4	19
2006	1	1	1	-	1	5	20
2007	0	-	-	-	-	6	20
2008	-	-	-	-	1	6	21
Mathematics:							
1999	-	1	-	-	2	11	23
2002	-	1	-	-	1	9	22
2003	-	1	-	-	1	8	20
2004	-	1	-	-	1	7	19
2005	-	2	-	-	1	6	18
2006	-	1	-	-	1	7	18
2007	-	1	-	-	1	8	20
2008	-	1	-	-	1	7	18
Science:							
1999	-	2	-	-	2	11	26
2002	-	1	-	-	1	9	22
2003	-	1	-	-	1	8	21
2004	-	1	-	-	-	6	20
2005	-	2	-	-	-	6	19
2006	-	1	-	-	1	6	19
2007	-	1	-	-	1	6	21
2008	-	1	1	-	1	5	19
Core Subject Indicator:							
1999
2002
2003
2004
2005
2006
2007
2008

(a) See table 3.3 for LEA data.

Since 2006, statutory assessment in Wales at the end of Key Stage 3 has been by means of teacher assessment only.

(b) D - Excepted or disapplied under Sections 113-116 of the 2002 Education Act.

N - Not awarded a level for reasons other than disapplication.

W - Working towards Level 1.

For further details see the Glossary.

(c) Before 2006, A (absent) was a valid level at Key Stage 3. Pupils achieving this level have been included under level N in this table.

NATIONAL CURRICULUM ASSESSMENTS: GENERAL INFORMATION
 ASESIAU'R CWRICWLWM CENEDLAETHOL: GWYBODAETH GYFFREDINOL

Canlyniadau asesiadau athrawon Cyfnod Allweddol 3, 1999-2008 (blynyddoedd penodedig) (a)

Canran

Level of attainment (b) Lefel cyrhaeddiad (b)				Achieving expected level (Level 5+)	Number of entries	
5	6	7	8+	Cyrraedd y lefel disgwyliedig (Lefel 5+)	Nifer y cofrestrïadau	
						Saesneg:
33	21	8	1	62	37,021	1999
34	21	9	-	64	38,888	2002
34	22	9	-	65	38,107	2003
34	24	9	-	67	38,544	2004
35	24	8	-	67	38,879	2005
36	24	8	-	68	38,256	2006
36	24	9	-	69	36,822	2007
37	24	8	-	69	36,266	2008
						Cymraeg:
32	27	11	1	71	4,728	1999
33	28	11	-	72	5,389	2002
34	29	10	-	74	5,414	2003
34	29	10	-	73	5,575	2004
35	30	10	0	75	5,544	2005
37	27	9	-	72	5,999	2006
37	26	9	-	73	5,627	2007
37	26	9	-	72	5,800	2008
						Mathemateg:
27	23	12	1	62	36,988	1999
26	27	13	1	66	38,843	2002
25	29	14	-	69	38,023	2003
26	32	14	-	71	38,532	2004
25	32	15	-	73	38,808	2005
25	30	16	1	72	38,254	2006
28	27	14	1	70	36,822	2007
29	27	15	1	72	36,266	2008
						Gwyddoniaeth:
31	21	8	-	59	36,962	1999
32	24	10	-	66	38,881	2002
32	25	11	-	69	38,027	2003
33	27	12	-	72	38,490	2004
33	27	12	-	72	38,808	2005
34	28	11	-	73	38,254	2006
35	26	10	-	70	36,822	2007
36	27	11	-	74	36,266	2008
						Dangosydd Pynciau Craidd:
.	.	.	.	47	37,099	1999
.	.	.	.	52	38,949	2002
.	.	.	.	54	38,158	2003
.	.	.	.	57	38,662	2004
.	.	.	.	58	38,547	2005
.	.	.	.	58	38,256	2006
.	.	.	.	57	36,822	2007
.	.	.	.	60	36,266	2008

(a) Gweler tabl 3.3 am ddata AALI.

Ers 2006, Aseiad Athrawon yw'r unig aseiad statudol ar gyfer Cyfnod Allweddol 3 yng Nghymru.

(b) D - Datgymhwyswyd o dan Adranau 113-116 o Ddeddf Addysg 2002.

N - Ni ddyfarnwyd lefel am resymau heblaw datgymhwysu.

W - Gweithio tuag at Lefel 1.

Am ragor o fanylion gweler yr Eirfa.

(c) Cyn 2006, roedd lefel A (absennol) yn lefel dilys ar gyfer Cyfnod Allweddol 3. Mae disgwyblion a enillodd y lefel yma wedi'u cynnwys o dan lefel N yn y tabl yma.

NATIONAL CURRICULUM ASSESSMENTS: GENERAL INFORMATION
 ASESIAU'R CWRICWLWM CENEDLAETHOL: GWYBODAETH GYFFREDINOL

1.6 Key Stage 3 teacher assessment results in the non core subjects, 2003-2008 (selected years) (a)

Canlyniadau asesiadau athrawon Cyfnod Allweddol 3 yn y pynciau di-graidd, 2003-2008 (blynyddoedd penodedig) (a)

Per cent

Canran

	Achieving expected level (Level 5+)			
	Cyrraedd y lefel disgwylidig (Lefel 5+)			
	Boys Bechgyn	Girls Merched	Pupils Disgyblion	
Art:				Celf:
2003	64	81	72	2003
2005	66	83	74	2005
2006	68	85	76	2006
2007	66	84	75	2007
2008	66	85	75	2008
Design and Technology:				Dylunio a Thechnoleg:
2003	61	78	69	2003
2005	66	80	73	2005
2006	66	81	73	2006
2007	68	82	75	2007
2008	68	82	75	2008
Geography:				Daearyddiaeth:
2003	63	71	67	2003
2005	66	74	70	2005
2006	66	75	71	2006
2007	65	76	70	2007
2008	67	77	72	2008
History:				Hanes:
2003	61	72	66	2003
2005	64	75	69	2005
2006	65	76	70	2006
2007	65	77	71	2007
2008	66	78	72	2008
Information Technology:				Technoleg Gwybodaeth:
2003	64	73	69	2003
2005	67	77	72	2005
2006	68	78	73	2006
2007	68	77	72	2007
2008	71	82	76	2008
Modern Foreign Language:				Iaith Dramor Fodern:
2003	40	59	49	2003
2005	44	63	53	2005
2006	47	65	56	2006
2007	49	67	58	2007
2008	53	70	62	2008
Music:				Cerddoriaeth:
2003	57	73	65	2003
2005	62	77	69	2005
2006	63	79	71	2006
2007	64	80	72	2007
2008	64	79	71	2008
Physical Education:				Addysg Gorfforol:
2003	66	68	67	2003
2005	70	69	70	2005
2006	71	72	71	2006
2007	73	70	72	2007
2008	72	72	72	2008
Welsh 2nd Language:				Cymraeg Ail iaith:
2003	35	54	44	2003
2005	39	59	48	2005
2006	39	59	49	2006
2007	41	61	51	2007
2008	44	64	54	2008

(a) See table 3.4 for LEA data.

(a) Gweler tabl 3.4 am ddata AALI.

Public Examinations

The data contained in the tables in this section are extracted from the Welsh Assembly Government School Examination Performance Information, which records the achievements of candidates entering examinations at recognised examination centres in Wales. A more detailed description of the data source can be found in the Glossary.

All data in this section relate to the examination achievements of full-time candidates of any age (unless stated otherwise) who entered an examination at a maintained secondary school, special school, pupil referral unit or independent school in Wales. Ages relate to pupils' age as at 31 August prior to the **start** of the academic year. Note that in "Schools in Wales: Examination Performance 2001" the ages were referred to as at the **end** of the academic year.

Part-time and external candidates are not included, and neither are students taking examinations at Further Education Institutions. In a few cases figures for boys and girls may not add to the total for all pupils, due to the unavailability of gender data. Details of the individual subjects contained within the broad subject groups presented in some of the tables can be found in the Glossary. 2007/08 data for each LEA is shown in chapter 4.

Arholiadau Cyhoeddus

Mae'r data sydd wedi'u cynnwys yn y tablau yn yr adran hon wedi'u tynnu o wybodaeth Perfformiad Ysgolion Llywodraeth Cynulliad Cymru sy'n cofnodi cyraeddiadau ymgeiswyr sy'n sefyll arholiadau mewn canolfannau arholiadau cydnabyddedig yng Nghymru. Mae disgrifiad llawnach o'r data i'w weld yn yr Eirfa.

Mae'r holl ddata yn yr adran hon yn ymwneud â chyrhaeddiad ymgeiswyr amser llawn o unrhyw oedran (oni nodir yn wahanol) a gofrestrodd am arholiad mewn unrhyw ysgol uwchradd a gynhelir, ysgol arbennig, uned cyfeirio disgyblion neu ysgol annibynnol yng Nghymru. Oedrannau ar 31 Awst cyn **dechrau'r** flwyddyn academaidd. Nodir mai oedrannau ar **ddiwedd** y flwyddyn academaidd a ddefnyddiwyd yn "Ysgolion yng Nghymru: Perfformiad mewn Arholiadau 2001".

Nid yw ymgeiswyr rhan-amser nac allanol wedi'u cynnwys, na myfyrwyr sy'n sefyll arholiadau mewn Sefydliadau Addysg Bellach. Mewn ychydig o achosion efallai na fydd y ffigurau ar gyfer bechgyn a merched yn adio i'r cyfanswm ar gyfer yr holl ddisgyblion, gan nad oes data am rywiau ar gael. Mae manylion am y pynciau unigol sydd o fewn y grwpiau bras a ddangosir yn rhai o'r tablau ar gael yn yr Eirfa. Dangosir data 2007/08 am bob AALl ym mhennod 4.

PUBLIC EXAMINATIONS: GENERAL INFORMATION
 ARHOLIADAU CYHOEDDUS: GWYBODAETH CYFFREDINOL

2.1 Examination achievements of pupils aged 15 (a) (b)

	2004/05		2005/06	
	Number Nifer	Percent Canran	Number Nifer	Percent Canran
Number of pupils aged 15	38,495	100	38,859	100
Number of pupils aged 15 who achieved:				
Level 1 threshold	32,803	85	33,424	86
Level 2 threshold	20,092	52	20,902	54
Level 2 threshold including a GCSE grade A*-C in English or Welsh first language and mathematics
Level 2 threshold in each of the core subjects (c)	14,767	38	15,416	40
At least one qualification	36,826	96	37,413	96
No graded result in a recognised qualification	1,669	4	1,446	4
1 or more ELQ only (d)	1,031	3	1,018	3
5 or more GCSEs grade A*-C or vocational equivalent	20,092	52	20,902	54
Average wider points score	328	.	335	.
Number of boys aged 15	19,628	100	19,784	100
Number of boys aged 15 who achieved:				
Level 1 threshold	16,102	82	16,491	83
Level 2 threshold	9,093	46	9,518	48
Level 2 threshold including a GCSE grade A*-C in English or Welsh first language and mathematics
Level 2 threshold in each of the core subjects (c)	6,879	35	7,174	36
At least one qualification	18,615	95	18,949	96
No graded result in a recognised qualification	1,013	5	835	4
1 or more ELQ only (d)	713	4	691	3
5 or more GCSEs grade A*-C or vocational equivalent	9,093	46	9,518	48
Average wider points score	305	.	314	.
Number of girls aged 15	18,867	100	19,075	100
Number of girls aged 15 who achieved:				
Level 1 threshold	16,701	89	16,933	89
Level 2 threshold	10,999	58	11,384	60
Level 2 threshold including a GCSE grade A*-C in English or Welsh first language and mathematics
Level 2 threshold in each of the core subjects (c)	7,888	42	8,242	43
At least one qualification	18,211	97	18,464	97
No graded result in a recognised qualification	656	3	611	3
1 or more ELQ only (d)	318	2	327	2
5 or more GCSEs grade A*-C or vocational equivalent	10,999	58	11,384	60
Average wider points score	351	.	357	.

(a) Ages at 31 August prior to the start of the academic year. Includes results for 15 year old pupils, in maintained schools and independent schools, achieved during the academic year and any examinations taken at an earlier age. See table 4.1 for local education authority data.

(b) Up to 2005/06, includes GCSEs, GCSE Short Course, GNVQs and NVQs. From 2006/07, includes all qualifications approved for pre-16 use in Wales.

(c) Core Subject Indicator: achieved the Level 2 threshold in each of English or Welsh first language, mathematics or science.

(d) ELQ: Entry Level Qualification.

PUBLIC EXAMINATIONS: GENERAL INFORMATION
ARHOLIADAU CYHOEDDUS: GWYBODAETH CYFFREDINOL

Cyraeddiadau arholiadau disgyblion 15 oed (a) (b)

2006/07		2007/08		
Number Nifer	Percent Canran	Number Nifer	Percent Canran	
39,576	100	39,027	100	Nifer y disgyblion 15 oed
34,039	86	33,885	87	Nifer y disgyblion 15 oed a enillodd:
21,779	55	22,617	58	Trothwy Lefel 1
				Trothwy Lefel 2
				Trothwy Lefel 2 gan gynnwys gradd
				TGAU A*-C mewn Saesneg neu Gymraeg iaith
17,567	44	17,783	46	gyntaf a mathemateg
15,841	40	17,331	44	Trothwy Lefel 2 ym mhob un o'r pynciau craidd (c)
38,174	96	38,063	98	O leiaf un cymhwyster cydnabyddedig
1,402	4	964	2	Dim gradd mewn cymhwyster cydnabyddedig
1,088	3	1,004	3	1 neu ragor ELQ yn unig (d)
				5 neu fwy TGAU gradd A*-C neu gymhwyster
21,433	54	21,778	56	cyfwerth
344	.	356	.	Sgôr pwyntiau cyfartalog eang
20,230	100	19,937	100	Nifer y bechgyn 15 oed
				Nifer y bechgyn 15 oed a enillodd:
16,856	83	16,744	84	Trothwy Lefel 1
10,115	50	10,501	53	Trothwy Lefel 2
				Trothwy Lefel 2 gan gynnwys gradd
				TGAU A*-C mewn Saesneg neu Gymraeg iaith
8,187	40	8,315	42	gyntaf a mathemateg
7,602	38	8,189	41	Trothwy Lefel 2 ym mhob un o'r pynciau craidd (c)
19,346	96	19,313	97	O leiaf un cymhwyster cydnabyddedig
884	4	624	3	Dim gradd mewn cymhwyster cydnabyddedig
737	4	675	3	1 neu ragor ELQ yn unig (d)
				5 neu fwy TGAU gradd A*-C neu gymhwyster
9,922	49	10,052	50	cyfwerth
323	.	334	.	Sgôr pwyntiau cyfartalog eang
19,346	100	19,090	100	Nifer y merched 15 oed
				Nifer y merched 15 oed a enillodd:
17,183	89	17,141	90	Trothwy Lefel 1
11,664	60	12,116	63	Trothwy Lefel 2
				Trothwy Lefel 2 gan gynnwys gradd
				TGAU A*-C mewn Saesneg neu Gymraeg iaith
9,380	48	9,468	50	gyntaf a mathemateg
8,239	43	9,142	48	Trothwy Lefel 2 ym mhob un o'r pynciau craidd (c)
18,828	97	18,750	98	O leiaf un cymhwyster cydnabyddedig
518	3	340	2	Dim gradd mewn cymhwyster cydnabyddedig
351	2	329	2	1 neu ragor ELQ yn unig (d)
				5 neu fwy TGAU gradd A*-C neu gymhwyster
11,511	60	11,726	61	cyfwerth
366	.	379	.	Sgôr pwyntiau cyfartalog eang

- (a) Oedrannau ar 31 Awst cyn dechrau'r flwyddyn academiaidd. Yn cynnwys canlyniadau disgyblion 15 oed, mewn ysgolion a gynhelir ac ysgolion annibynnol, a enillwyd yn ystod y flwyddyn academiaidd ac unrhyw arholiadau a gymerwyd yn gynharach. Gweler tabl 4.1 am ddata awdurdodau addysg lleol.
- (b) Hyd at 2005/06 yn cynnwys TGAU, TGAU Cwrs Byf, GNVQ ac NVQ. O 2006/07 yn cynnwys pob cymhwyster cydnabyddedig i ddisgyblion o dan 16 mlwydd oed yng Nghymru.
- (c) Dangosydd Pynciau Craidd: cyflawnodd drothwy Lefel 2 mewn Saesneg neu Gymraeg iaith gyntaf, mathemateg a gwyddoniaeth.
- (d) ELQ: Cymhwyster Lefel Mynediad.

PUBLIC EXAMINATIONS: GENERAL INFORMATION
 ARHOLIADAU CYHOEDDUS: GWYBODAETH CYFFREDINOL

2.2 Examination achievements of pupils aged 17 (a) (b)

Cyraeddiadau arholiadau disgyblion 17 oed (a) (b)

	2004/05	2005/06	2006/07	2007/08	
Pupils:					Disgyblion:
Number of pupils aged 17 entering a volume equivalent to 2 A levels	10,373	10,731	10,592	10,943	Nifer y disgyblion 17 oed a gofrestrodd am gyfaint o ddysgu yn gyfartal i 2 lefel A
Percentage of 17 year old pupils entering a volume equivalent to 2 A levels who achieved the Level 3 threshold	94	94	94	94	Canran y disgyblion 17 oed a gofrestrodd am gyfaint o ddysgu yn gyfartal i 2 lefel A ac yn ennill y trothwy lefel 3
Number of pupils aged 17	12,072	12,507	12,418	12,653	Nifer y disgyblion 17 oed
Average wider points score for pupils aged 17	619	631	Sgor bwyntiau gyfartalog eang am bob disgybl 17 oed
Boys:					Bechgyn:
Number of pupils aged 17 entering a volume equivalent to 2 A levels	4,483	4,772	4,728	4,790	Nifer y disgyblion 17 oed a gofrestrodd am gyfaint o ddysgu yn gyfartal i 2 lefel A
Percentage of 17 year old pupils entering a volume equivalent to 2 A levels who achieved the Level 3 threshold	93	92	92	93	Canran y disgyblion 17 oed a gofrestrodd am gyfaint o ddysgu yn gyfartal i 2 lefel A ac yn ennill y trothwy lefel 3
Number of pupils aged 17	5,439	5,758	5,716	5,673	Nifer y disgyblion 17 oed
Average wider points score for pupils aged 17	585	596	Sgor bwyntiau gyfartalog eang am bob disgybl 17 oed
Girls:					Merched:
Number of pupils aged 17 entering a volume equivalent to 2 A levels	5,890	5,959	5,864	6,153	Nifer y disgyblion 17 oed a gofrestrodd am gyfaint o ddysgu yn gyfartal i 2 lefel A
Percentage of 17 year old pupils entering a volume equivalent to 2 A levels who achieved the Level 3 threshold	96	95	95	95	Canran y disgyblion 17 oed a gofrestrodd am gyfaint o ddysgu yn gyfartal i 2 lefel A ac yn ennill y trothwy lefel 3
Number of pupils aged 17	6,633	6,749	6,702	6,980	Nifer y disgyblion 17 oed
Average wider points score for pupils aged 17	647	659	Sgor bwyntiau gyfartalog eang am bob disgybl 17 oed

(a) Ages at 31 August prior to the start of the academic year. Up to 2005/06, includes A levels, AS levels and Advanced Vocational Certificates of Education (AVCE). From 2006/07 includes all qualifications approved for use in Wales. See table 4.2 for local education authority data.

(b) Includes independent schools, but excludes further education institutions.

(a) Oedrannau ar 31 Awst cyn dechrau'r flwyddyn academaidd. Hyd at 2005/06 yn cynnwys Safon Uwch, Uwch Gyfrannol a Thystysgrifau Addysg Alwedigaethol Uwch (TAAU). O 2006/07 yn cynnwys pob cymhwyster cydnabyddedig yng Nghymru. Gweler tabl 4.2 am ddata awdurdodau addysg lleol.

(b) Yn cynnwys ysgolion annibynnol, ond nid sefydliadau addysg bellach.

PUBLIC EXAMINATIONS: GENERAL INFORMATION
ARHOLIADAU CYHOEDDUS: GWYBODAETH CYFFREDINOL

2.3 Entry Level Qualifications: entries and results (a)

Cymwysterau Lefel Mynediad: cofrestrïadau a chanlyniadau (a)

	1999/2000	2005/06	2006/07	2007/08	
Pupils:					Disgyblion:
Total entries	16,502	13,548	13,925	13,288	Cyfanswm y cofrestrïadau
Total entries attained at level:					Cyfanswm y cofrestrïadau ar lefel:
Entry 3	5,136	4,880	5,054	4,854	Mynediad 3
Entry 2	6,606	5,053	5,201	5,022	Mynediad 2
Entry 1	3,359	2,360	2,456	2,372	Mynediad 1
No graded result	1,401	1,255	1,214	1,040	Dim gradd wedi'i dyfarnu
Percentage of entries attained at level:					Canran y cofrestrïadau ar lefel:
Entry 3	31	36	36	37	Mynediad 3
Entry 2	40	37	37	38	Mynediad 2
Entry 1	20	17	18	18	Mynediad 1
No graded result	8	9	9	8	Dim gradd wedi'i dyfarnu
Boys:					Bechgyn:
Total entries	10,640	8,852	8,790	8,848	Cyfanswm y cofrestrïadau
Total entries attained at level:					Cyfanswm y cofrestrïadau ar lefel:
Entry 3	3,240	3,191	3,201	3,193	Mynediad 3
Entry 2	4,289	3,278	3,260	3,340	Mynediad 2
Entry 1	2,206	1,578	1,560	1,619	Mynediad 1
No graded result	905	805	769	696	Dim gradd wedi'i dyfarnu
Percentage of entries attained at level:					Canran y cofrestrïadau ar lefel:
Entry 3	30	36	36	36	Mynediad 3
Entry 2	40	37	37	38	Mynediad 2
Entry 1	21	18	18	18	Mynediad 1
No graded result	9	9	9	8	Dim gradd wedi'i dyfarnu
Girls:					Merched:
Total entries	5,862	4,696	5,135	4,440	Cyfanswm y cofrestrïadau
Total entries attained at level:					Cyfanswm y cofrestrïadau ar lefel:
Entry 3	1,896	1,689	1,853	1,661	Mynediad 3
Entry 2	2,317	1,775	1,941	1,682	Mynediad 2
Entry 1	1,153	782	896	753	Mynediad 1
No graded result	496	450	445	344	Dim gradd wedi'i dyfarnu
Percentage of entries attained at level:					Canran y cofrestrïadau ar lefel:
Entry 3	32	36	36	37	Mynediad 3
Entry 2	40	38	38	38	Mynediad 2
Entry 1	20	17	17	17	Mynediad 1
No graded result	8	10	9	8	Dim gradd wedi'i dyfarnu

(a) Entry Level Qualification: Entry level is the first level of the National Qualifications Framework. It lies beneath Level 1 (or Foundation level) and is divided into three sublevels: 1, 2 and 3, with 3 being the highest. Entry levels provide progression to GCSEs, Foundation GNVQs or NVQ Level 1.

(a) Cymwysterau Lefel Mynediad: Lefel mynediad yw lefel gyntaf y Fframwaith Cymwysterau Cenedlaethol. Mae'r lefel mynediad islaw Lefel 1 (neu Lefel Sylfaen) ac mae'n cael ei rhannu yn dair is lefel: 1, 2, a 3 – 3 yw'r uchaf. Mae lefelau mynediad yn darparu dilyniant hyd at TGAU, GNVQ Sylfaenol neu NVQ Lefel 1.

PUBLIC EXAMINATIONS: GENERAL INFORMATION
 ARHOLIADAU CYHOEDDUS: GWYBODAETH CYFFREDINOL

2.4 GCSE short course: entries and results by subject group 2007/08

TGAU cwrs byr: cofrestrïadau a chanlyniadau yn ôl grŵp pwnc, 2007/08

Subject Group (a)	Number of entries	Percentage of entries achieved at grade: Canran y cofrestrïadau fesul gradd:										No graded result	Grŵp pwnc (a)
		Nifer y cofrestrïadau											
		A*	A	B	C	D	E	F	G	A*-C	A*-G	Dim gradd wedi'i dyfarnu	
Sciences													Gwyddorau
Design and Technology	169	1	5	11	28	24	12	9	8	45	98	2	Dylunio a Technoleg
ICT	4,132	4	10	11	25	22	14	7	3	51	96	4	TGC
Business Studies	59	2	2	14	22	25	20	10	5	39	100	0	Astudiaethau Busnes
Social Sciences													Gwyddorau Cymdeithasol
Geography	27	0	0	0	15	19	22	15	15	15	85	15	Daearyddiaeth
History	150	1	7	8	13	20	21	11	8	28	88	12	Hanes
Social Studies	329	3	14	14	20	19	14	10	5	51	99	1	Ast. Cymdeithasol
Arts													Celfyddydau
Art and Design	76	3	4	11	26	11	17	14	12	43	97	3	Celf a Dylunio
French	*	*	*	*	*	*	*	*	*	*	*	*	Ffrangeg
English Language	20	0	0	0	0	5	10	25	30	0	70	30	Saesneg
Spanish	8	0	0	25	38	25	13	0	0	63	100	0	Sbaeneg
Physical Education	1,712	5	8	15	23	24	14	6	3	50	97	3	Addysg Gorfforol
Religious Studies	16,404	8	13	19	19	14	11	8	4	59	96	4	Astudiaethau Crefyddol
Welsh Second Language	10,929	3	4	6	33	20	15	11	6	45	97	3	Cymraeg Ail Iaith
Vocational													
	134	1	3	10	26	23	19	10	4	40	96	4	Galwedigaethol
All subjects													
	34,151	5	9	13	25	17	13	9	5	53	96	4	Pob pwnc

(a) For details of individual subjects contained within each subject group see the Glossary.

(a) Am fanylion y pynciau unigol o fewn pob grŵp pwnc gweler yr Eirfa.

FOR FURTHER ANALYSIS
VISIT OUR WEBSITE

www.wales.gov.uk/statistics

I GAEL DADANSODDIAD PELLACH
YMWELWCH A'N GWEFAN

www.cymru.gov.uk/ystadegau

PUBLIC EXAMINATIONS: GENERAL INFORMATION
 ARHOLIADAU CYHOEDDUS: GWYBODAETH CYFFREDINOL

2.5 GCSE: entries and results (pupils aged 15 only (a)) by subject group, 2007/08 (b)

TGAU: cofrestriadau a chanlyniadau (disgyblion 15 oed yn unig (a)) yn ôl grŵp pwnc, 2007/08 (b)

Subject Group (c)	Number of entries Nifer y cofrestriadau	Percentage of entries achieved at grade: Canran y cofrestriadau fesul gradd:										No grade Dim gradd	Grŵp pwnc (c)
		A*	A	B	C	D	E	F	G	A*-C	A*-G		
Pupils:													Disgyblion:
Sciences													Gwyddorau
Biological Sciences	4,010	16	24	26	23	7	2	1	-	88	99	1	Gwyddorau Biolegol
Chemistry	3,722	18	26	26	22	6	1	-	-	92	100	-	Cemeg
Physics	3,657	18	23	26	23	7	2	-	-	90	100	-	Ffiseg
Science Double Award	66	24	30	12	24	0	6	0	0	91	97	3	Gwyddoniaeth Dyfarniad Dwbl (d)
Other Science	52,962	3	9	17	32	17	11	6	3	62	98	2	Gwyddoniaeth arall
Design and Technology	12,968	5	11	15	29	20	11	5	2	60	97	3	Dylunio a Technoleg
ICT	9,911	11	16	15	27	16	7	4	2	68	98	2	TGC
Home Economics	4,674	2	11	17	28	19	12	6	3	59	98	2	Economeg y Cartref
Mathematics	37,953	5	11	17	23	16	12	9	5	56	97	3	Mathemateg
Social Sciences													Gwyddorau Cymdeithasol
Business Studies	4,075	6	11	16	28	18	10	6	3	61	97	3	Astudiaethau Busnes
Economics	78	14	21	24	17	15	4	3	1	76	99	1	Economeg
Geography	11,887	8	14	16	29	16	9	5	2	67	99	1	Daearyddiaeth
History	12,616	12	18	20	17	12	9	6	4	66	97	3	Hanes
Humanities	467	3	8	18	20	16	13	10	7	49	96	4	Y Dyniaethau
Social Studies	1,062	5	13	21	27	12	7	4	3	66	92	8	Astudiaethau Cymdeithasol
Vocational Studies	3,485	4	11	15	33	19	10	5	2	63	98	2	Astudiaethau Galwedigaethol
Arts													Celfyddydau
Art and Design	10,685	8	15	22	30	13	7	3	1	75	99	1	Celf a Dylunio
Classical Studies	127	40	17	13	13	5	4	2	2	83	96	4	Astudiaethau Clasurrol
Communication Studies	3,247	5	14	25	26	15	8	4	2	69	98	2	Astudiaethau Cyfathrebu
Drama	4,569	8	21	25	21	13	6	3	2	75	99	1	Drama
English Language	35,636	3	10	20	31	21	10	4	1	64	99	1	Saesneg
English Literature	28,724	5	12	21	30	18	8	3	1	69	99	1	Llenyddiaeth Saesneg
French	7,840	10	20	22	22	16	7	2	1	74	100	-	Ffrangeg
German	2,082	12	20	23	22	17	5	1	-	77	99	1	Almaeneg
Spanish	1,379	15	18	20	21	16	6	2	1	74	100	-	Sbaeneg
Other Modern Foreign Language	268	40	25	11	8	8	3	3	-	84	97	3	Ieithoedd Tramor Modern Arall
Music	3,756	10	24	26	20	11	5	3	1	79	99	1	Cerddoriaeth
Physical Education	9,132	9	18	22	21	21	7	2	1	69	100	-	Addysg Gorfforol
Religious Studies	8,154	10	19	23	19	12	8	5	3	72	99	1	Astudiaethau Crefyddol
Welsh Language	5,388	3	11	26	32	19	6	2	1	73	100	-	Cymraeg
Welsh Literature	4,109	6	14	18	34	18	6	2	-	72	100	-	Llenyddiaeth Gymraeg
Welsh Second Language	9,997	9	16	16	30	15	8	4	2	70	99	1	Cymraeg Ail Iaith

PUBLIC EXAMINATIONS: GENERAL INFORMATION
ARHOLIADAU CYHOEDDUS: GWYBODAETH CYFFREDINOL

2.5 (continued) GCSE: entries and results (pupils aged 15 only (a)) by subject group, 2007/08 (b)

(parhad) TGAU: cofrestrïadau a chanlyniadau (disgyblion 15 oed yn unig (a)) yn ôl grŵp pwnc, 2007/08 (b)

Subject Group (c)	Number of entries Nifer y cofrestrïadau	Percentage of entries achieved at grade: Canran y cofrestrïadau fesul gradd:										No grade Dim gradd	Grŵp pwnc (c)	
		A*	A	B	C	D	E	F	G	A*-C	A*-G			
Pupils:													Disgyblion:	
Vocational Subjects (e)													Pynciau Galwedigaethol (e)	
Additional Applied Science	1,778	0	-	6	18	31	23	13	5	24	96	4	Gwydd. Gymhwysol Ychwanegol	
Applied Physical Education	109	0	7	18	25	27	19	4	0	50	100	0	Addysg Gorfforol Gymwysedig	
Art and Design	346	7	6	15	28	17	14	9	2	56	98	2	Celf a Dylunio	
Business	2,022	2	10	19	26	18	11	8	4	56	97	3	Busnes	
Construction	74	0	4	16	24	23	11	15	7	45	100	0	Adeiladu	
Engineering	824	-	4	12	15	17	19	15	8	31	91	9	Peirianeg	
Health and Social Care	2,486	2	10	19	22	15	15	10	5	54	97	3	Iechyd & Gofal Cymd.	
Hospitality and Catering	74	0	1	22	30	18	3	1	9	53	84	16	Lletygarwch ac Arlwyo	
IT	846	1	10	22	25	16	11	7	4	58	96	4	TG	
Leisure and Tourism	1,310	2	6	11	18	18	15	14	7	37	91	9	Hamdden a Thwristiaeth	
Manufacturing	104	2	4	7	7	13	20	14	9	19	75	25	Gweithgynhyrchu	
Performing Arts	252	-	4	19	21	20	14	13	7	44	98	2	Celfyddydau Perfformio	
Science	3,130	-	3	17	33	25	13	6	2	53	98	2	Gwyddoniaeth	
All subjects	312,041	6	13	19	27	17	9	5	2	65	98	2	Pob pwnc	

(a) 15 year old cohort (pupils) 2008: 39,027

(b) Figures should be treated with caution - it is possible for pupils to have entered more than one GCSE within a small number of subject groups. A small number of candidates were counted twice in previous publications (due to attempting the same GCSE twice by the age of 15), thus inflating percentages.

(c) For details of individual subjects contained within each subject group see the Glossary.

(d) Each Science Double Award is counted as 2 entries.

(e) GCSE Vocational Double awards were awarded for the first time in 2003/04. Each double award is counted as 2 entries.

(a) Carfan 15 oed (disgyblion) 2008: 39,027

(b) Dylid trin y ffigyrau gyda gofal - mae'n bosib fod disgyblion wedi ymgeisio mwy nag un pwnc o fewn nifer fechan o grwpiau pwnc. Cyfrwyd nifer bychan o disgyblion ddwywiath mewn cyhoeddiadau blaenorol (gan iddynt ymgeisio'r un TGAU ddwywaith erbyn eu bod yn 15 oed), gan chwyddo'r chanrannau.

(c) Am fanylion y pynciau unigol o fewn pob grŵp pwnc gweler yr Eirfa.

(d) Cyfrifir pob arholiad gwyddoniaeth dyfarniad dwbl fel 2 gofrestrïad.

(e) Cyflwynwyd Dyfarniadau Dwbl Galwedigaethol TGAU yn 2003/04 am y tro cyntaf. Mae pob dyfarniad yn cyfrif fel 2 bwnc.

PUBLIC EXAMINATIONS: GENERAL INFORMATION
 ARHOLIADAU CYHOEDDUS: GWYBODAETH CYFFREDINOL

2.5 (continued) GCSE: entries and results (pupils aged 15 only (a)) by subject group, 2007/08 (b)

(parhad) TGAU: cofrestrïadau a chanlyniadau (disgyblion 15 oed yn unig (a)) yn ôl grŵp pwnc, 2007/08 (b)

Subject Group (c)	Number of entries	Percentage of entries achieved at grade: Canran y cofrestrïadau fesul gradd:										No grade Dim gradd	Grŵp pwnc (c)
		A*	A	B	C	D	E	F	G	A*-C	A*-G		
Boys:													Bechgyn:
Sciences													Gwyddorau
Biological Sciences	2,090	16	24	27	22	7	2	1	-	89	100	-	Gwyddorau Biolegol
Chemistry	1,991	19	25	27	21	6	1	-	-	92	100	-	Cemeg
Physics	2,007	18	25	26	22	6	2	-	-	91	100	-	Ffiseg
Science Double Award	30	33	27	7	20	0	7	0	0	87	93	7	Gwyddoniaeth Dyfarniad Dwbl (d)
Other Science Design and Technology	26,649	3	9	17	32	18	10	6	3	62	98	2	Gwyddoniaeth arall
ICT	8,432	3	9	14	30	22	12	6	2	55	97	3	Dylunio a Technoleg
Home Economics	5,535	9	14	15	27	18	8	4	3	64	97	3	TGC
Mathematics	415	-	7	16	29	24	14	6	2	53	99	1	Economeg y Cartref
	19,052	5	11	17	23	16	12	9	5	55	97	3	Mathemateg
Social Sciences													Gwyddorau Cymdeithasol
Business Studies	2,278	6	10	16	28	18	11	6	3	60	98	2	Astudiaethau Busnes
Economics	58	14	19	28	16	14	5	2	2	76	98	2	Economeg
Geography	6,857	7	13	15	30	17	10	5	2	65	99	1	Daearyddiaeth
History	6,371	10	17	19	18	13	9	6	4	64	96	4	Hanes
Humanities	231	2	8	16	17	16	16	10	9	42	94	6	Y Dyniaethau Astudiaethau
Social Studies Vocational Studies	300	2	11	14	29	14	10	5	4	56	88	12	Cymdeithasol Astudiaethau
	1,594	3	8	13	35	20	11	5	3	60	98	2	Galwedigaethol
Arts													Celfyddydau
Art and Design	4,123	4	10	18	32	17	10	5	2	64	99	1	Celf a Dylunio
Classical Studies	60	37	20	18	10	2	3	3	2	85	95	5	Astudiaethau Clasurol
Communication Studies	1,575	4	10	21	26	19	10	6	2	60	97	3	Astudiaethau Cyfathrebu
Drama	1,621	6	18	22	23	16	8	4	2	69	99	1	Drama
English Language	17,713	2	7	17	30	23	13	5	2	56	99	1	Saesneg
English Literature	13,530	4	10	19	31	21	10	3	1	63	98	2	Llenyddiaeth Saesneg
French	3,043	9	16	21	23	19	8	3	1	69	100	-	Ffrangeg
German	875	9	17	23	23	21	5	1	0	73	99	1	Almaeneg
Spanish	544	14	16	19	24	17	7	2	1	73	100	-	Sbaeneg
Other Modern Foreign Language	125	37	24	12	8	6	4	5	1	81	97	3	Ieithoedd Tramor Modern Arall
Music	1,787	8	22	25	22	12	6	3	1	76	99	1	Cerddoriaeth
Physical Education	5,675	8	17	22	22	21	7	2	1	69	100	-	Addysg Gorfforol
Religious Studies	3,090	8	16	22	20	13	9	5	4	66	98	2	Astudiaethau Crefyddol
Welsh Language	2,562	2	8	21	33	25	9	2	1	63	100	-	Cymraeg
Welsh Literature	1,814	4	10	15	35	22	9	4	1	64	100	-	Llenyddiaeth Gymraeg
Welsh Second Language	4,351	6	12	13	30	18	11	7	3	61	99	1	Cymraeg Ail Iaith

PUBLIC EXAMINATIONS: GENERAL INFORMATION
ARHOLIADAU CYHOEDDUS: GWYBODAETH CYFFREDINOL

2.5 (continued) GCSE: entries and results (pupils aged 15 only (a)) by subject group, 2007/08 (b)

(parhad) TGAU: cofrestrïadau a chanlyniadau (disgyblion 15 oed yn unig (a)) yn ôl grŵp pwnc, 2007/08 (b)

Subject Group (c)	Number of entries Nifer y cofrestrïadau	Percentage of entries achieved at grade: Canran y cofrestrïadau fesul gradd:										No grade Dim gradd	Grŵp pwnc (c)
		A*	A	B	C	D	E	F	G	A*-C	A*-G		
Boys:													Bechgyn:
Vocational Subjects (e)													Pynciau Galwedigaethol (e)
Additional Applied Science	852	0	-	5	14	31	25	15	6	19	96	4	Gwydd. Gymhwysol Ychwanegol
Applied Physical Education	53	0	6	23	32	23	15	2	0	60	100	0	Addysg Gorfforol Gymwysedig
Art and Design	162	6	6	11	26	20	13	11	4	48	96	4	Celf a Dylunio
Business	1,108	2	8	18	27	19	12	7	4	55	97	3	Busnes
Construction	74	0	4	16	24	23	11	15	7	45	100	0	Adeiladu
Engineering	802	-	4	12	14	17	19	15	8	31	91	9	Peirianeg
Health and Social Care	114	2	6	15	18	12	19	18	7	41	98	2	Iechyd & Gofal Cyrd.
Hospitality and Catering	31	0	0	26	29	13	0	3	6	55	77	23	Lletygarwch ac Arlwyo
IT	512	1	9	20	26	17	10	8	5	55	95	5	TG
Leisure and Tourism	632	-	4	13	16	16	13	17	9	33	89	11	Hamdden a Thwristiaeth
Manufacturing	80	3	5	9	9	14	26	16	6	25	88	13	Gweithgynhyrchu
Performing Arts	89	0	3	17	18	19	18	18	4	38	98	2	Celfyddydau Perfformio
Science	1,414	0	2	14	32	27	15	6	2	48	98	2	Gwyddoniaeth
All subjects	152,301	5	11	18	28	18	10	5	3	62	98	2	Pob pwnc

(a) 15 year old cohort (pupils) 2008: 39,027

(b) Figures should be treated with caution - it is possible for pupils to have entered more than one GCSE within a small number of subject groups. A small number of candidates were counted twice in previous publications (due to attempting the same GCSE twice by the age of 15), thus inflating percentages.

(c) For details of individual subjects contained within each subject group see the Glossary.

(d) Each Science Double Award is counted as 2 entries.

(e) GCSE Vocational Double awards were awarded for the first time in 2003/04. Each double award is counted as 2 entries.

(a) Carfan 15 oed (disgyblion) 2008: 39,027

(b) Dylid trin y ffigyrau gyda gofal - mae'n bosib fod disgyblion wedi ymgeisio mwy nag un pwnc o fewn nifer fechan o grwpiau pwnc. Cyfrwyd nifer bychan o disgyblion ddwywiath mewn cyhoeddiadau blaenorol (gan iddynt ymgeisio'r un TGAU ddwywaith erbyn eu bod yn 15 oed), gan chwyddo'r chanrannau.

(c) Am fanylion y pynciau unigol o fewn pob grŵp pwnc gweler yr Eirfa.

(d) Cyfrifir pob arholiad gwyddoniaeth dyfarniad dwbl fel 2 gofrestrïad.

(e) Cyflwynwyd Dyfarniadau Dwbl Galwedigaethol TGAU yn 2003/04 am y tro cyntaf. Mae pob dyfarniad yn cyfrif fel 2 bwnc.

PUBLIC EXAMINATIONS: GENERAL INFORMATION
 ARHOLIADAU CYHOEDDUS: GWYBODAETH CYFFREDINOL

2.5 (continued) GCSE: entries and results (pupils aged 15 only (a)) by subject group, 2007/08 (b)

(parhad) TGAU: cofrestrïadau a chanlyniadau (disgyblion 15 oed yn unig (a)) yn ôl grŵp pwnc, 2007/08 (b)

Subject Group (c)	Number of entries Nifer y cofrestrïadau	Percentage of entries achieved at grade: Canran y cofrestrïadau fesul gradd:										No grade Dim gradd	Grŵp pwnc (c)
		A*	A	B	C	D	E	F	G	A*-C	A*-G		
Girls:													Merched:
Sciences													Gwyddorau
Biological Sciences	1,920	16	24	25	23	7	3	1	-	87	99	1	Gwyddorau Biolegol
Chemistry	1,731	17	27	25	22	7	2	-	-	91	100	-	Cemeg
Physics	1,650	17	22	25	25	8	2	1	-	89	100	-	Ffiseg
Science Double Award	36	17	33	17	28	0	6	0	0	94	100	0	Gwyddoniaeth Dyfarniad Dwbl (d)
Other Science	26,313	3	9	17	31	17	11	6	3	61	98	2	Gwyddoniaeth arall
Design and Technology	4,536	9	17	18	26	16	8	3	1	70	98	2	Dylunio a Technoleg
ICT	4,376	13	18	16	26	15	6	3	2	73	98	2	TGC
Home Economics	4,259	2	11	18	28	19	12	6	3	59	98	2	Economeg y Cartref
Mathematics	18,901	4	11	18	23	16	12	9	5	57	97	3	Mathemateg
Social Sciences													Gwyddorau Cymdeithasol
Business Studies	1,797	7	11	15	29	17	10	6	2	62	97	3	Astudiaethau Busnes
Economics	20	15	25	15	20	20	0	5	0	75	100	0	Economeg
Geography	5,030	10	16	16	28	15	8	4	2	70	99	1	Daearyddiaeth
History	6,245	13	19	20	16	11	9	6	3	69	98	2	Hanes
Humanities	236	5	8	20	23	16	11	10	5	56	97	3	Y Dyniaethau
Social Studies	762	6	15	23	26	12	6	4	2	70	94	6	Astudiaethau Cymdeithasol
Vocational Studies	1,891	5	13	16	31	18	8	4	2	65	98	2	Astudiaethau Galwedigaethol
Arts													Celfyddydau
Art and Design	6,562	11	18	24	28	11	4	2	1	82	99	1	Celf a Dylunio
Classical Studies	67	43	15	7	16	7	4	1	1	82	97	3	Astudiaethau Clasurol
Communication Studies	1,672	7	17	29	25	12	5	2	1	78	98	2	Astudiaethau Cyfathrebu
Drama	2,948	9	22	27	20	12	6	3	1	78	99	1	Drama
English Language	17,923	4	13	23	32	18	7	2	1	71	99	1	Saesneg
English Literature	15,194	6	14	23	30	16	6	2	1	74	99	1	Llenyddiaeth Saesneg
French	4,797	11	22	23	21	14	6	2	1	77	100	-	Ffrangeg
German	1,207	14	22	24	21	14	4	1	-	80	100	-	Almaeneg
Spanish	835	15	20	21	20	16	6	2	1	75	100	-	Sbaeneg
Other Modern Foreign Language	143	42	25	10	8	9	1	1	0	86	98	2	Ieithoedd Tramor Modern Arall
Music	1,969	11	26	27	18	9	5	2	1	82	99	1	Cerddoriaeth
Physical Education	3,457	10	19	21	19	20	8	2	1	69	100	-	Addysg Gorfforol
Religious Studies	5,064	12	22	24	18	10	6	4	2	76	99	1	Astudiaethau Crefyddol
Welsh Language	2,826	3	15	31	32	15	3	1	-	81	100	-	Cymraeg
Welsh Literature	2,295	8	17	21	33	15	4	1	-	79	100	-	Llenyddiaeth Gymraeg
Welsh Second Language	5,646	11	19	18	30	12	6	2	1	78	99	1	Cymraeg Ail Iaith

PUBLIC EXAMINATIONS: GENERAL INFORMATION
ARHOLIADAU CYHOEDDUS: GWYBODAETH CYFFREDINOL

2.5 (continued) GCSE: entries and results (pupils aged 15 only (a)) by subject group, 2007/08 (b)

(parhad) TGAU: cofrestrïadau a chanlyniadau (disgyblion 15 oed yn unig (a)) yn ôl grŵp pwnc, 2007/08 (b)

Subject Group (c)	Number of entries Nifer y cofrestrïadau	Percentage of entries achieved at grade: Canran y cofrestrïadau fesul gradd:										No grade Dim gradd	Grŵp pwnc (c)
		A*	A	B	C	D	E	F	G	A*-C	A*-G		
Girls:													Merched:
Vocational Subjects (e)													Pynciau Galwedigaethol (e)
Additional Applied Science	926	0	-	6	22	30	22	12	3	29	96	4	Gwydd. Gymhwysol Ychwanegol
Applied Physical Education	56	0	9	14	18	30	23	5	0	41	100	0	Addysg Gorfforol Gymwysedig
Art and Design	184	9	6	18	30	15	15	7	1	63	100	0	Celf a Dylunio
Business	914	2	13	19	24	17	9	9	4	57	97	3	Busnes
Construction	0	Adeiladu
Engineering	22	0	5	9	23	27	9	23	5	36	100	0	Peirianeg
Health and Social Care	2,372	2	10	19	23	15	14	9	5	54	97	3	Iechyd & Gofal Cyimd.
Hospitality and Catering	43	0	2	19	30	21	5	0	12	51	88	12	Lletygarwch ac Arlwyo
IT	334	2	12	26	23	13	13	6	4	63	99	1	TG
Leisure and Tourism	678	3	9	10	19	20	16	12	5	40	93	7	Hamdden a Thwristiaeth
Manufacturing	24	0	0	0	0	8	0	8	17	0	33	67	Gweithgynhyrchu
Performing Arts	163	1	4	20	22	21	12	10	9	47	99	1	Celfyddydau Perfformio
Science	1,716	-	3	20	34	23	12	6	2	57	99	1	Gwyddoniaeth
All subjects	159,740	7	15	20	27	15	8	4	2	69	98	2	Pob pwnc

(a) 15 year old cohort (pupils) 2008: 39,027

(b) Figures should be treated with caution - it is possible for pupils to have entered more than one GCSE within a small number of subject groups. A small number of candidates were counted twice in previous publications (due to attempting the same GCSE twice by the age of 15), thus inflating percentages.

(c) For details of individual subjects contained within each subject group see the Glossary.

(d) Each Science Double Award is counted as 2 entries.

(e) GCSE Vocational Double awards were awarded for the first time in 2003/04. Each double award is counted as 2 entries.

(a) Carfan 15 oed (disgyblion) 2008: 39,027

(b) Dylid trin y ffigyrau gyda gofal - mae'n bosib fod disgyblion wedi ymgeisio mwy nag un pwnc o fewn nifer fechan o grwpiau pwnc. Cyfrwyd nifer bychan o disgyblion ddwywiath mewn cyhoeddiadau blaenorol (gan iddynt ymgeisio'r un TGAU ddwywaith erbyn eu bod yn 15 oed), gan chwyddo'r chanrannau.

(c) Am fanylion y pynciau unigol o fewn pob grŵp pwnc gweler yr Eirfa.

(d) Cyfrifir pob arholiad gwyddoniaeth dyfarniad dwbl fel 2 gofrestrïad.

(e) Cyflwynwyd Dyfarniadau Dwbl Galwedigaethol TGAU yn 2003/04 am y tro cyntaf. Mae pob dyfarniad yn cyfrif fel 2 bwnc.

PUBLIC EXAMINATIONS: GENERAL INFORMATION
 ARHOLIADAU CYHOEDDUS: GWYBODAETH CYFFREDINOL

2.6 GCSE: entries and results by medium of examination (pupils aged 15 only), 2007/08 (a) (b)

TGAU: cofrestrïadau a chanlyniadau yn ôl cyfrwng yr arholiad (disgyblion 15 oed yn unig), 2007/08 (a) (b)

	Number of entries	Percentage of entries achieved at grade: Canran y cofrestrïadau fesul gradd:										No graded result		
		Nifer y cofrestrïadau	A*	A	B	C	D	E	F	G	A*-C			A*-G
Pupils:														Disgyblion:
Medium of Welsh	23,634	8	16	21	27	14	8	4	2	71	99	1	Cyfrwng Cymraeg	
Medium of English	204,553	7	13	18	26	16	10	6	3	64	98	2	Cyfrwng Saesneg	
Percentage of entries and grades through the medium of Welsh		10	12	12	11	11	9	9	7	7	11	10	5	Canran y cofrestrïadau pwnc a'r graddau drwy gyfrwng y Gymraeg
Boys :														Bechgyn:
Medium of Welsh	11,126	7	14	20	28	16	8	4	2	68	99	1	Cyfrwng Cymraeg	
Medium of English	101,205	6	12	18	26	17	10	6	3	62	98	2	Cyfrwng Saesneg	
Percentage of entries and grades through the medium of Welsh		10	11	12	11	10	9	8	7	7	11	10	5	Canran y cofrestrïadau pwnc a'r graddau drwy gyfrwng y Gymraeg
Girls:														Merched:
Medium of Welsh	12,508	9	17	22	26	13	7	4	1	74	99	1	Cyfrwng Cymraeg	
Medium of English	103,348	7	14	19	25	15	9	5	3	66	98	2	Cyfrwng Saesneg	
Percentage of entries and grades through the medium of Welsh		11	13	13	12	11	9	9	8	6	12	11	5	Canran y cofrestrïadau pwnc a'r graddau drwy gyfrwng y Gymraeg

- (a) Medium of examination for boards other than the WJEC is not available, but is assumed to be English.
- (b) Note that the methodology has changed from that used in previous years. Figures from 2002/03 only include subjects which could be entered through the medium of Welsh or English (Figures do not include entries in English, English Literature, Welsh Language, Welsh Second Language, Welsh Literature).

- (a) Nid yw'r cyfrwng arholi ar gyfer byrddau heblaw CBAC ar gael ond tybir mai Saesneg ydyw.
- (b) Noder bod y fethodoloeg yn wahanol i'r hyn a ddefnyddiwyd mewn blynyddoedd blaenorol. Mae ffigyrau o 2002/03 ond yn cynnwys pynciau y gellid eu hymgeisio trwy gyfrwng y Gymraeg neu'r Saesneg (Nid yw'r ffigyrau yn cynnwys Saesneg, Saesneg Llenyddiaeth, Cymraeg, Cymraeg Ail Iaith, Llenyddiaeth Gymraeg).

PUBLIC EXAMINATIONS: GENERAL INFORMATION
ARHOLIADAU CYHOEDDUS: GWYBODAETH CYFFREDINOL

2.7 GCSE: Welsh medium entries by subject (pupils aged 15 only), 2007/08 (a) (b)

TGAU: cofrestriadau cyfrwng Cymraeg fesul pwnc (disgyblion 15 oed yn unig), 2007/08 (a) (b)

Subject Group (c)	Welsh medium entries		Grŵp pwnc (c)
	Cofrestriadau cyfrwng Cymraeg		
	Number Nifer	Per cent Canran	
Sciences			Gwyddorau
Biological Sciences	465	12	Gwyddorau Biolegol
Chemistry	457	12	Cemeg
Physics	451	12	Ffiseg
Science Double Award (d)	6	9	Gwyddoniaeth Dyfarniad Dwbl (d)
Other Science	5,068	10	Gwyddoniaeth arall
Design and Technology	1,487	11	Dylunio a Thechnoleg
ICT	958	10	TGC
Home Economics	415	9	Economeg y Cartref
Mathematics	3,993	11	Mathemateg
Social Sciences			Gwyddorau Cymdeithasol
Business Studies	486	12	Astudiaethau Busnes
Economics	0	0	Economeg
Geography	1,474	12	Daeryddiaeth
History	1,430	11	Hanes
Humanities	0	0	Y Dyniaethau
Social Studies	35	3	Astudiaethau Cymdeithasol
Vocational Studies	326	9	Astudiaethau Galwedigaethol
Arts			Celfyddydau
Art and Design	1,134	11	Celf a Dylunio
Classical Studies	0	0	Astudiaethau Clasur
Communication Studies	214	7	Astudiaethau Cyfathrebu
Drama	599	13	Drama
French	845	11	Ffrangeg
German	181	9	Almaeneg
Spanish	242	18	Sbaeneg
Other Modern Foreign Language	0	0	Ieithoedd Tramor Modern Eraill
Music	550	15	Cerddoriaeth
Physical Education	965	11	Addysg Gorfforol
Religious Studies	718	9	Astudiaethau Crefyddol
All Vocational Subjects (e)	1,135	8	Pob Pwnc Galwedigaethol (e)
All subjects	23,634	10	Pob pwnc

- (a) Medium of examination for boards other than the WJEC is not available, but is assumed to be English.
- (b) Figures only include subjects which could be entered through the medium of Welsh or English (Figures do not include entries in English, English Literature, Welsh Language, Welsh Second Language, Welsh Literature).
- (c) For details of individual subjects contained within each subject group see the Glossary.
- (d) Each Science Double Award is counted as two entries.
- (e) GCSE Vocational Double awards were awarded for the first time in 2003/04. Each double award is counted as two entries.

- (a) Nid yw'r cyfrwng arholi ar gyfer byrddau heblaw CBAC ar gael ond tybir mai Saesneg ydyw.
- (b) Mae'r ffigyrau ond yn cynnwys pynciau y gellid eu hymgeisio trwy gyfrwng y Gymraeg neu'r Saesneg (Nid yw'r ffigyrau yn cynnwys Saesneg, Llenyddiaeth Saesneg, Cymraeg, Cymraeg Ail Iaith, Llenyddiaeth Gymraeg).
- (c) Am fanylion y pynciau unigol o fewn pob grŵp pwnc gweler yr Eirfa.
- (d) Cyfrif pob arholiad gwyddoniaeth dyfarniad dwbl fel dau gofrestrriad.
- (e) Cyflwynwyd Dyfarniadau Dwbl Galwedigaethol TGAU yn 2003/04 am y tro cyntaf. Mae pob dyfarniad dwbl yn cyfrif fel dau bwnc.

PUBLIC EXAMINATIONS: GENERAL INFORMATION
 ARHOLIADAU CYHOEDDUS: GWYBODAETH CYFFREDINOL

2.8 AS level: entries and results by subject group, 2007/08

Safon Uwch Atodol: cofrestrïadau a chanlyniadau yn ôl grŵp pwnc, 2007/08

Subject Group (a)	Number of entries	Percentage of entries achieved at grade:							No graded result	Grŵp pwnc (a)
		Canran y cofrestrïadau fesul gradd:								
	Nifer y cofrestrïadau	A	B	C	D	E	A-C	A-E	Dim gradd wedi'i dyfarnu	
Pupils:										Disgyblion:
Sciences										Gwyddorau
Biological Sciences	2,760	16	16	16	16	16	48	80	20	Gwyddorau Biolegol
Chemistry	2,348	21	17	16	17	14	54	85	15	Cemeg
Physics	1,639	22	16	18	16	13	55	85	15	Ffiseg
Science Single Award	6	0	17	33	0	0	50	50	50	Gwyddoniaeth Dyfarniad Sengl
Other Science	496	18	20	16	16	14	55	85	15	Gwyddoniaeth arall
Design and Technology	1,208	11	20	27	19	13	58	89	11	Dylunio a Technoleg
ICT	2,190	12	21	25	20	12	57	89	11	TGC
Home Economics	43	0	12	16	21	26	28	74	26	Economeg y Cartref
Mathematics	2,970	33	16	14	11	10	62	83	17	Mathemateg
Social Sciences										Gwyddorau Cymdeithasol
Business Studies	1,051	12	14	22	21	16	48	85	15	Astudiaethau Busnes
Economics	418	19	17	16	16	12	51	79	21	Economeg
Geography	1,795	21	21	20	17	11	63	91	9	Daearyddiaeth
History	2,685	18	30	28	16	6	75	97	3	Hanes
Social Studies	3,761	13	15	19	18	15	47	80	20	Astudiaethau Cymdeithasol
Vocational Studies	37	3	5	19	30	22	27	78	22	Astudiaethau Galwedigaeth
Arts										Celfyddydau
Art and Design	1,877	25	20	24	17	8	68	93	7	Celf a Dylunio
Classical Studies	50	26	18	20	18	6	64	88	12	Astudiaethau Clasurrol
Communication Studies	940	18	27	27	17	7	72	96	4	Astudiaethau Cyfathrebu
Drama	794	16	33	28	14	6	77	97	3	Drama
English Language	1,165	18	24	28	19	8	69	96	4	Saesneg
English Literature	2,031	19	27	29	18	5	75	98	2	Llenyddiaeth Saesneg
French	998	19	19	22	19	13	60	92	8	Ffrangeg
German	290	28	20	19	16	13	67	96	4	Almaeneg
Spanish	251	16	18	20	21	17	53	91	9	Sbaeneg
Other Modern										leithoedd Tramor
Foreign Language	116	60	16	7	9	2	83	93	7	Modern Eraill
Music	749	22	25	25	14	9	72	95	5	Cerddoriaeth
Physical Education	1,325	9	15	17	21	19	41	82	18	Addysg Gorrfford
Religious Studies	1,399	20	21	22	17	11	63	91	9	Astudiaethau Crefyddol
Welsh Language	278	17	27	29	23	4	73	100	0	Cymraeg
Welsh Second language	610	16	25	25	23	8	67	98	2	Cymraeg Ail Iaith
General Studies	491	6	13	22	20	19	41	80	20	Astudiaethau Cyffredinol
Vocational Subjects (b)										Pynciau Galwedigaethol (b)
Art and Design	30	80	17	3	0	0	100	100	0	Celf a Dylunio
Business	86	5	7	22	29	14	34	77	23	Busnes
Health and Social Care	426	3	12	23	22	12	39	72	28	Iechyd a Gofal Cymd.
IT	30	3	17	23	7	3	43	53	47	TG
Leisure and Recreation	24	4	17	25	29	17	46	92	8	Hamdden ac Adloniant
Travel and Tourism	18	6	6	28	39	11	39	89	11	Teithio a Thwristiaeth
All subjects	37,385	18	20	21	17	11	59	88	12	Pob Pwnc

- (a) For details of individual subjects contained within each subject group see the Glossary.
 (b) Vocational Double Award AS levels were awarded for the first time in 2005/06. Each double award is counted as two entries.

- (a) Am fanylion y pynciau unigol o fewn pob grŵp pwnc gweler yr Eirfa.
 (b) Cafodd Dyfarniad Dwbl Galwedigaethol lefel UG eu dyfarnu am y tro cyntaf yn 2005/06. Cyfrir pob dyfarniad dwbl fel dau bwnc.

PUBLIC EXAMINATIONS: GENERAL INFORMATION
ARHOLIADAU CYHOEDDUS: GWYBODAETH CYFFREDINOL

2.8 (continued) AS level: entries and results by subject group, 2007/08

(parhad) Safon Uwch Atodol:
cofrestrïadau a chanlyniadau yn ôl grŵp pwnc, 2007/08

Subject Group (a)	Number of entries	Percentage of entries achieved at grade: Canran y cofrestrïadau fesul gradd:							No graded result	Grŵp pwnc (a)
		A	B	C	D	E	A-C	A-E		
	Nifer y cofrestrïadau								Dim gradd wedi'i dyfarnu	
Boys:										Bechgyn:
Sciences										Gwyddorau
Biological Sciences	1,257	16	15	17	16	15	48	79	21	Gwyddorau Biolegol
Chemistry	1,268	21	18	17	16	14	56	86	14	Cemeg
Physics	1,277	21	15	18	16	13	55	84	16	Ffiseg
Science Single Award	*	*	*	*	*	*	*	*	*	Gwyddoniaeth Dyfarniad Sengl
Other Science	359	21	22	15	17	13	58	88	12	Gwyddoniaeth arall
Design and Technology	744	9	18	27	19	15	54	88	12	Dylunio a Technoleg
ICT	1,348	9	20	23	22	14	52	88	12	TGC
Home Economics	6	0	0	17	17	50	17	83	17	Economeg y Cartref
Mathematics	1,770	32	15	14	11	10	61	82	18	Mathemateg
Social Sciences										Gwyddorau Cymdeithasol
Business Studies	604	10	15	23	22	19	47	87	13	Astudiaethau Busnes
Economics	301	20	14	16	16	13	50	79	21	Economeg
Geography	1,031	19	21	20	17	13	60	90	10	Daearyddiaeth
History	1,297	15	32	28	15	7	75	97	3	Hanes
Social Studies	1,332	9	13	19	18	16	42	77	23	Astudiaethau Cymdeithasol
Vocational Studies	24	4	4	17	25	29	25	79	21	Astudiaethau Galwedigaeth
Arts										Celfyddydau
Art and Design	548	22	16	22	20	10	61	91	9	Celf a Dylunio
Classical Studies	36	28	19	11	22	6	58	86	14	Astudiaethau Clasur
Communication Studies	435	11	25	29	20	10	66	96	4	Astudiaethau Cyfathrebu
Drama	261	15	30	26	17	7	70	94	6	Drama
English Language	389	17	22	28	20	8	67	95	5	Saesneg
English Literature	601	19	26	27	19	6	72	98	2	Llenyddiaeth Saesneg
French	272	25	18	23	16	13	66	94	6	Ffrangeg
German	105	31	16	22	13	14	70	97	3	Almaeneg
Spanish	71	23	18	21	10	18	62	90	10	Sbaeneg
Other Modern										Ieithoedd Tramor
Foreign Language	51	59	22	2	12	0	82	94	6	Modern Eraill
Music	378	19	22	24	19	12	64	95	5	Cerddoriaeth
Physical Education	849	7	13	16	22	20	37	79	21	Addysg Gorfforol
Religious Studies	343	17	24	17	17	12	58	87	13	Astudiaethau Crefyddol
Welsh Language	50	20	38	20	8	14	78	100	0	Cymraeg
Welsh Second language	133	13	26	23	25	13	61	98	2	Cymraeg Ail Iaith
General Studies	219	5	16	23	17	18	45	80	20	Astudiaethau Cyffredinol
Vocational Subjects (b)										Pynciau Galwedigaethol (b)
Art and Design	*	*	*	*	*	*	*	*	*	Celf a Dylunio
Business	54	4	6	20	26	15	30	70	30	Busnes
Health and Social Care	18	0	11	17	22	6	28	56	44	Iechyd a Gofal Cymd.
IT	26	4	19	27	8	4	50	62	38	TG
Leisure and Recreation	13	0	8	23	38	15	31	85	15	Hamdden ac Adloniant
Travel and Tourism	6	17	17	17	17	0	50	67	33	Teithio a Thwristiaeth
All subjects	17,481	17	19	21	17	13	56	87	13	Pob Pwnc

(a) For details of individual subjects contained within each subject group see the Glossary.

(b) Vocational Double Award AS levels were awarded for the first time in 2005/06. Each double award is counted as two entries.

(a) Am fanylion y pynciau unigol o fewn pob grŵp pwnc gweler yr Eirfa.

(b) Cafodd Dyfarniad Dwbl Galwedigaethol lefel UG eu dyfarnu am y tro cyntaf yn 2005/06. Cyfrir pob dyfarniad dwbl fel dau bwnc.

PUBLIC EXAMINATIONS: GENERAL INFORMATION
 ARHOLIADAU CYHOEDDUS: GWYBODAETH CYFFREDINOL

2.8 (continued) AS level: entries and results by subject group, 2007/08

(parhad) Safon Uwch Atodol: cofrestrïadau a chanlyniadau yn ôl grŵp pwnc, 2007/08

Subject Group (a)	Number of entries	Percentage of entries achieved at grade: Canran y cofrestrïadau fesul gradd:							No graded result	Grŵp pwnc (a)
		A	B	C	D	E	A-C	A-E		
	Nifer y cofrestrïadau								Dim gradd wedi'i dyfarnu	
Girls:										Merched:
Sciences										Gwyddorau
Biological Sciences	1,503	16	17	16	17	16	48	81	19	Gwyddorau Biolegol
Chemistry	1,080	20	16	16	18	14	52	85	15	Cemeg
Physics	362	24	18	15	15	16	57	88	12	Ffiseg
Science Single Award	5	0	20	40	0	0	60	60	40	Gwyddoniaeth Dyfarniad Sengl
Other Science	137	12	16	19	15	15	47	77	23	Gwyddoniaeth arall
Design and Technology	464	14	23	26	18	10	63	91	9	Dylunio a Technoleg
ICT	842	16	22	27	17	9	65	91	9	TGC
Home Economics	37	0	14	16	22	22	30	73	27	Economeg y Cartref
Mathematics	1,200	34	17	14	12	10	64	86	15	Mathemateg
Social Sciences										Gwyddorau Cymdeithasol
Business Studies	447	13	14	21	20	13	48	81	19	Astudiaethau Busnes
Economics	117	15	22	16	16	10	54	80	20	Economeg
Geography	764	24	21	21	17	9	66	93	7	Daearyddiaeth
History	1,388	20	29	27	16	5	75	96	4	Hanes
Social Studies	2,429	15	16	18	18	14	49	81	19	Astudiaethau Cymdeithasol
Vocational Studies	13	0	8	23	38	8	31	77	23	Astudiaethau Galwedigaeth
Arts										Celfyddydau
Art and Design	1,329	26	21	24	15	7	71	94	6	Celf a Dylunio
Classical Studies	14	21	14	43	7	7	79	93	7	Astudiaethau Clasurol
Communication Studies	505	24	29	26	14	5	78	97	3	Astudiaethau Cyfathrebu
Drama	533	17	35	28	13	5	80	98	2	Drama
English Language	776	18	25	28	19	7	71	97	3	Saesneg
English Literature	1,430	19	28	29	18	5	76	99	1	Llenyddiaeth Saesneg
French	726	16	20	21	21	13	57	91	9	Ffrangeg
German	185	26	22	18	17	12	66	96	4	Almaeneg
Spanish	180	13	18	19	25	17	50	92	8	Sbaeneg
Other Modern										Ieithoedd Tramor
Foreign Language	65	62	11	11	6	3	83	92	8	Modern Eraill
Music	371	25	29	27	9	5	81	95	5	Cerddoriaeth
Physical Education	476	12	18	19	20	16	50	86	14	Addysg Gorfforol
Religious Studies	1,056	21	21	23	17	11	64	93	7	Astudiaethau Crefyddol
Welsh Language	228	16	25	31	27	2	71	100	0	Cymraeg
Welsh Second language	477	17	25	26	23	7	68	98	2	Cymraeg Ail Iaith
General Studies	272	6	11	21	22	19	39	80	20	Astudiaethau Cyffredinol
Vocational Subjects (b)										Pynciau Galwedigaethol (b)
Art and Design	26	81	15	4	0	0	100	100	0	Celf a Dylunio
Business	32	6	9	25	34	13	41	88	13	Busnes
Health and Social Care	408	3	12	24	22	12	39	73	27	Iechyd a Gofal Cymd.
IT	*	*	*	*	*	*	*	*	*	TG
Leisure and Recreation	11	9	27	27	18	18	64	100	0	Hamdden ac Adloniant
Travel and Tourism	12	0	0	33	50	17	33	100	0	Teithio a Thwristiaeth
All subjects	19,904	19	21	22	17	10	62	90	10	Pob Pwnc

(a) For details of individual subjects contained within each subject group see the Glossary.

(b) Vocational Double Award AS levels were awarded for the first time in 2005/06. Each double award is counted as two entries.

(a) Am fanylion y pynciau unigol o fewn pob grŵp pwnc gweler yr Eirfa.

(b) Cafodd Dyfarniad Dwbl Galwedigaethol lefel UG eu dyfarnu am y tro cyntaf yn 2005/06. Cyfrir pob dyfarniad dwbl fel dau bwnc.

PUBLIC EXAMINATIONS: GENERAL INFORMATION
ARHOLIADAU CYHOEDDUS: GWYBODAETH CYFFREDINOL

2.9 A level: entries and results by subject group, 2007/08

Safon Uwch: cofrestrïadau a chanlyniadau yn ôl grŵp pwnc, 2007/08

Subject Group (a)	Number of entries	Percentage of entries achieved at grade: Canran y cofrestrïadau fesul gradd:								No graded result	Dim gradd wedi'i dyfarnu	Grŵp pwnc (a)									
		A	B	C	D	E	A-C	A-E													
Pupils:											Disgyblion:										
Sciences											Gwyddorau										
Biological Sciences	2,188	25	22	22	14	11	70	96	4	Gwyddorau Biolegol											
Chemistry	1,774	32	25	18	13	9	75	97	3	Cemeg											
Physics	1,098	27	20	18	17	12	66	94	6	Ffiseg											
Other Science	324	22	23	22	16	13	67	96	4	Gwyddoniaeth arall											
Design and Technology	911	11	27	29	22	8	67	97	3	Dylunio a Technoleg											
ICT	1,587	14	29	28	20	7	71	97	3	TGC											
Home Economics	54	2	17	35	26	19	54	98	2	Economeg y Cartref											
Mathematics	2,578	46	23	15	9	5	84	98	2	Mathemateg											
Social Sciences											Gwyddorau Cymdeithasol										
Business Studies	696	17	26	30	18	7	74	98	2	Astudiaethau Busnes											
Economics	330	29	28	24	11	5	81	98	2	Economeg											
Geography	1,574	24	29	27	14	5	80	99	1	Daeryddiaeth											
History	2,520	27	35	27	9	2	89	100	-	Hanes											
Social Studies	2,352	19	23	26	19	9	69	97	3	Astudiaethau Cymdeithasol											
Vocational Studies	*	*	*	*	*	*	*	*	*	Astudiaethau Galwedigaeth											
Arts											Celfyddydau										
Art and Design	1,482	30	23	24	16	5	78	98	2	Celf a Dylunio											
Classical Studies	65	25	22	35	15	3	82	100	0	Astudiaethau Clasurol											
Communication Studies	880	18	32	31	14	4	80	99	1	Astudiaethau Cyfathrebu											
Drama	803	22	39	25	10	3	86	99	1	Drama											
English Language	933	23	33	25	15	3	81	99	1	Saesneg											
English Literature	2,142	26	29	28	13	3	83	100	-	Llenyddiaeth Saesneg											
French	803	30	27	23	13	5	80	99	1	Ffrangeg											
German	249	34	23	21	14	6	78	99	1	Almaeneg											
Spanish	158	39	16	22	14	7	77	98	2	Sbaeneg											
Other Modern Foreign Language	170	42	38	11	5	2	91	98	2	Ieithoedd Tramor Modern											
Music	627	18	30	25	18	7	74	98	2	Cerddoriaeth											
Physical Education	1,030	13	19	27	22	15	59	96	4	Addysg Gorfforol											
Religious Studies	1,023	22	27	27	17	6	76	98	2	Astudiaethau Crefyddol											
Welsh Language	331	19	27	28	22	4	74	100	-	Cymraeg											
Welsh Second language	486	18	26	27	18	8	71	98	2	Cymraeg Ail Iaith											
General Studies	207	15	16	13	19	14	44	77	23	Astudiaethau Cyffredinol											
Vocational Subjects (b)											Pynciau Galwedigaethol (b)										
Art and Design	24	83	17	0	0	0	100	100	0	Celf a Dylunio											
Business	106	1	10	20	34	18	31	83	17	Busnes											
Health and Social Care	492	3	18	33	21	15	54	90	10	Iechyd a Gofal Cymd.											
IT	70	7	23	34	27	6	64	97	3	TG											
Leisure and Recreation	24	0	13	38	25	17	50	92	8	Hamdden ac Adloniant											
Travel and Tourism	*	*	*	*	*	*	*	*	*	Teithio a Thwristiaeth											
All subjects	30,099	25	26	25	15	6.8	76	97	3	Pob Pwnc											

(a) For details of individual subjects contained within each subject group see the Glossary.

(b) Vocational Double Award A levels were awarded for the first time in 2006/07. Each double award is counted as two entries.

(a) Am fanylion y pynciau unigol o fewn pob grŵp pwnc gweler yr Eirfa.

(b) Cafodd Dyfarniad Dwbl Galwedigaethol lefel U eu dyfarnu am y tro cyntaf yn 2006/07. Cyfrir pob dyfarniad dwbl fel dau bwnc.

PUBLIC EXAMINATIONS: GENERAL INFORMATION
 ARHOLIADAU CYHOEDDUS: GWYBODAETH CYFFREDINOL

2.9 (continued) A level: entries and results by subject group, 2007/08

(parhad) Safon Uwch: cofrestrïadau a chanlyniadau yn ôl grŵp pwnc, 2007/08

Subject Group (a)	Number of entries	Percentage of entries achieved at grade:							No graded result	Dim gradd wedi'i dyfarnu	Grŵp pwnc (a)
		Canran y cofrestrïadau fesul gradd:									
	Nifer y cofrestrïadau	A	B	C	D	E	A-C	A-E			
Boys:										Bechgyn:	
Sciences										Gwyddorau	
Biological Sciences	950	25	20	23	14	12	68	94	6	Gwyddorau Biolegol	
Chemistry	914	31	25	18	14	9	73	96	4	Cemeg	
Physics	852	26	20	18	17	13	64	94	6	Ffiseg	
Other Science	241	22	20	24	15	14	66	94	6	Gwyddoniaeth arall	
Design and Technology	551	8	23	29	26	11	60	96	4	Dylunio a Technoleg	
ICT	997	11	26	30	21	8	66	96	4	TGC	
Home Economics	*	*	*	*	*	*	*	*	*	Economeg y Cartref	
Mathematics	1,487	43	23	17	9	6	82	97	3	Mathemateg	
Social Sciences										Gwyddorau Cymdeithasol	
Business Studies	426	14	24	32	19	9	70	98	2	Astudiaethau Busnes	
Economics	235	24	28	27	12	6	79	97	3	Economeg	
Geography	892	18	28	30	16	6	77	99	1	Daearyddiaeth	
History	1,213	23	35	28	11	2	86	99	1	Hanes	
Social Studies	673	16	22	27	20	11	65	96	4	Astudiaethau Cymdeithasol	
Vocational Studies	0	Astudiaethau Galwedigaeth	
Arts										Celfyddydau	
Art and Design	408	22	19	29	20	6	70	97	3	Celf a Dylunio	
Classical Studies	28	25	11	29	29	7	64	100	0	Astudiaethau Clasurol	
Communication Studies	341	11	27	37	18	6	75	99	1	Astudiaethau Cyfathrebu	
Drama	220	21	35	22	15	4	79	98	2	Drama	
English Language	276	19	29	28	20	4	76	100	0	Saesneg	
English Literature	543	25	27	29	15	3	81	99	1	Llenyddiaeth Saesneg	
French	212	32	25	21	13	8	78	99	1	Ffrangeg	
German	80	31	20	24	18	8	75	100	0	Almaeneg	
Spanish	53	38	17	23	13	8	77	98	2	Sbaeneg	
Other Modern Foreign Language	76	39	39	11	7	0	89	96	4	Ieithoedd Tramor Modern	
Music	306	18	25	26	19	10	70	98	2	Cerddoriaeth	
Physical Education	596	9	16	28	24	17	54	95	5	Addysg Gorfforol	
Religious Studies	223	16	26	26	20	11	67	98	2	Astudiaethau Crefyddol	
Welsh Language	69	17	33	28	17	4	78	100	0	Cymraeg	
Welsh Second language	96	13	18	32	24	13	63	99	1	Cymraeg Ail Iaith	
General Studies	81	16	16	16	17	12	48	78	22	Astudiaethau Cyffredinol	
Vocational Subjects (b)										Pynciau Galwedigaethol (b)	
Art and Design	6	83	17	0	0	0	100	100	0	Celf a Dylunio	
Business	72	0	11	17	33	25	28	86	14	Busnes	
Health and Social Care	6	0	0	50	17	33	50	100	0	Iechyd a Gofal Cymd.	
IT	58	9	22	36	24	5	67	97	3	TG	
Leisure and Recreation	21	0	10	33	29	19	43	90	10	Hamdden ac Adloniant	
Travel and Tourism	0	Teithio a Thwristiaeth	
All subjects	13,203	22	25	25	16	8.4	72	97	3	Pob Pwnc	

(a) For details of individual subjects contained within each subject group see the Glossary.

(b) Vocational Double Award A levels were awarded for the first time in 2006/07. Each double award is counted as two entries.

(a) Am fanylion y pynciau unigol o fewn pob grŵp pwnc gweler yr Eirfa.

(b) Cafodd Dyfarniad Dwbl Galwedigaethol lefel U eu dyfarnu am y tro cyntaf yn 2006/07. Cyfrif pob dyfarniad dwbl fel dau bwnc.

PUBLIC EXAMINATIONS: GENERAL INFORMATION
ARHOLIADAU CYHOEDDUS: GWYBODAETH CYFFREDINOL

2.9 (continued) A level: entries and results by subject group, 2007/08

(parhad) Safon Uwch: cofrestrïadau a chanlyniadau yn ôl grŵp pwnc, 2007/08

Subject Group (a)	Number of entries	Percentage of entries achieved at grade: Canran y cofrestrïadau fesul gradd:								No graded result	Dim gradd wedi'i dyfarnu	Grŵp pwnc (a)
		A	B	C	D	E	A-C	A-E				
Girls:											Merched:	
Sciences											Gwyddorau	
Biological Sciences	1,238	26	24	22	15	11	72	97	3		Gwyddorau Biolegol	
Chemistry	860	33	25	19	12	8	77	97	3		Cemeg	
Physics	246	31	21	19	14	11	71	96	4		Ffiseg	
Other Science	83	19	34	16	20	11	69	100	0		Gwyddoniaeth arall	
Design and Technology	360	17	33	27	16	5	77	98	3		Dylunio a Technoleg	
ICT	590	18	33	26	16	4	78	98	2		TGC	
Home Economics	53	2	17	36	25	19	55	98	2		Economeg y Cartref	
Mathematics	1,091	49	23	14	9	3	86	99	1		Mathemateg	
Social Sciences											Gwyddorau Cymdeithasol	
Business Studies	270	22	30	27	15	4	79	99	1		Astudiaethau Busnes	
Economics	95	41	28	17	9	4	86	100	0		Economeg	
Geography	682	30	32	23	12	3	85	99	1		Daeryddiaeth	
History	1,307	30	36	25	7	1	91	100	-		Hanes	
Social Studies	1,679	21	23	26	18	9	70	97	3		Astudiaethau Cymdeithasol	
Vocational Studies	*	*	*	*	*	*	*	*	*		Astudiaethau Galwedigaeth	
Arts											Celfyddydau	
Art and Design	1,074	34	25	22	14	4	80	99	1		Celf a Dylunio	
Classical Studies	37	24	30	41	5	0	95	100	0		Astudiaethau Clasurol	
Communication Studies	539	22	35	27	12	3	84	99	1		Astudiaethau Cyfathrebu	
Drama	583	22	40	26	7	3	89	99	1		Drama	
English Language	657	25	34	24	14	3	83	99	1		Saesneg	
English Literature	1,599	26	30	28	13	3	84	100	-		Llenyddiaeth Saesneg	
French	591	30	28	24	13	5	81	99	1		Ffrangeg	
German	169	36	24	20	13	6	80	99	1		Almaeneg	
Spanish	105	40	15	22	14	7	77	98	2		Sbaeneg	
Other Modern Foreign Language	94	45	36	11	4	3	91	99	1		Ieithoedd Tramor Modern	
Music	321	19	35	24	17	4	78	98	2		Cerddoriaeth	
Physical Education	434	18	22	25	19	11	66	96	4		Addysg Gorfforol	
Religious Studies	800	23	28	27	16	5	78	99	2		Astudiaethau Crefyddol	
Welsh Language	262	19	26	28	23	3	73	100	-		Cymraeg	
Welsh Second language	390	19	28	26	17	7	73	97	3		Cymraeg Ail Iaith	
General Studies	126	14	17	10	20	15	41	76	24		Astudiaethau Cyffredinol	
Vocational Subjects (b)											Pynciau Galwedigaethol (b)	
Art and Design	18	83	17	0	0	0	100	100	0		Celf a Dylunio	
Business	34	3	9	26	35	3	38	76	24		Busnes	
Health and Social Care	486	3	18	32	21	15	54	90	10		Iechyd a Gofal Cymd.	
IT	12	0	25	25	42	8	50	100	0		TG	
Leisure and Recreation	*	*	*	*	*	*	*	*	*		Hamdden ac Adloniant	
Travel and Tourism	*	*	*	*	*	*	*	*	*		Teithio a Thwristiaeth	
All subjects	16,896	26	28	24	14	6	78	98	2		Pob Pwnc	

(a) For details of individual subjects contained within each subject group see the Glossary.

(b) Vocational Double Award A levels were awarded for the first time in 2006/07. Each double award is counted as two entries.

(a) Am fanylion y pynciau unigol o fewn pob grŵp pwnc gweler yr Eirfa.

(b) Cafodd Dyfarniad Dwbl Galwedigaethol lefel U eu dyfarnu am y tro cyntaf yn 2006/07. Cyfrir pob dyfarniad dwbl fel dau bwnc.

National Curriculum Assessments: LEA information

The tables in this chapter give a breakdown, by Local Education Authority of the results for Key Stages 1, 2 and 3 of the National Curriculum. The chapter also includes England comparisons.

Since 2002 in Wales statutory assessment at the end of Key Stage 1 has been by means of Teacher Assessment only. Following the outcome of the Daugherty Assessment Review Group in 2004, Key Stage 2 tasks/tests were made optional in 2005 and Key Stage 3 tasks/tests were made optional in 2006. Only results for teacher assessments appear in this publication.

For further details see the Glossary.

Aseidiadau'r Cwricwlwm Cenedlaethol: Gwybodaeth AALI

Mae'r tablau yn y bennod hon yn rhoi dadansoddiad, yn ôl Awdurdod Addysg Lleol o'r canlyniadau ar gyfer Cyfnodau Allweddol 1, 2 a 3 o'r Cwricwlwm Cenedlaethol. Mae'r bennod hefyd yn cynnwys cymariaethau â Lloegr.

Ers 2002, aseidiadau athrawon yw'r unig aseidiadau statudol ar gyfer Cyfnod Allweddol 1 yng Nghymru. Yn dilyn canlyniadau Grŵp Adolygu Aseidiadau Daugherty, gwnaed profi yng Nghyfnod Allweddol 2 yn opsiynol yng Nghymru yn 2005, a phrofi yng Nghyfnod Allweddol 3 yn opsiynol yng Nghymru yn 2006. Canlyniadau aseidiadau athrawon yn unig sy'n ymddangos yn y cyhoeddiad yma.

I gael manylion pellach gweler yr Eirfa.

NATIONAL CURRICULUM ASSESSMENTS: LEA INFORMATION
 ASESIAU'R CWRICWLWM CENEDLAETHOL: GWYBODAETH AALI

**3.1 Key Stage 1 teacher assessments
 results, by LEA, 2008 (a)**

**Canlyniadau asemiadau athrawon Cyfnod
 Allweddol 1, yn ôl AALI, 2008 (a)**

	Percentage of pupils achieving expected level (Level 2+) Canran o ddisgyblion yn cyrraedd y lefel disgwylidig (Lefel 2+)				Percentage of pupils achieving the Core Subject Indicator (b)		Canran Canran o ddisgyblion yn ennill y Dangosydd Pynciau Craidd (b)
	English	Welsh	Mathematics	Science			
	Saesneg	Cymraeg	Mathemateg	Gwyddoniaeth			
Isle of Anglesey	82	79	87	91	75	Ynys Môn	
Gwynedd	76	90	88	91	84	Gwynedd	
Conwy	86	92	88	90	84	Conwy	
Denbighshire	82	90	89	90	80	Sir Ddinbych	
Flintshire	85	93	87	91	82	Sir y Fflint	
Wrexham	83	92	88	89	81	Wrecsam	
Powys	85	87	89	90	83	Powys	
Ceredigion	72	89	86	88	81	Ceredigion	
Pembrokeshire	84	90	90	91	82	Sir Benfro	
Carmarthenshire	75	85	84	86	76	Sir Gaerfyrddin	
Swansea	81	91	86	88	79	Abertawe	
Neath Port Talbot	79	86	84	89	78	Castell-Nedd Port Talbot	
Bridgend	82	90	86	89	81	Pen-y-Bont ar Ogwr	
The Vale of Glamorgan	88	97	92	93	86	Bro Morgannwg	
Rhondda Cynon Taff	79	87	85	88	78	Rhondda Cynon Taf	
Merthyr Tydfil	76	94	82	85	75	Merthyr Tudful	
Caerphilly	82	94	86	92	81	Caerffili	
Blaenau Gwent	76	87	83	86	73	Blaenau Gwent	
Torfaen	84	95	89	92	83	Tor-faen	
Monmouthshire	89	100	90	93	86	Sir Fynwy	
Newport	88	100	92	95	88	Casnewydd	
Cardiff	84	92	87	90	82	Caerdydd	
Wales (c)	82	89	87	90	81	Cymru (c)	
England (c)	..	.	90	89	..	Lloegr (c)	

(a) See table 1.1 for historical data and table 1.2 for 2008 assessment target data.

(b) The core subject indicator represents the percentage of pupils achieving level 2 or above in English or Welsh (first language), mathematics and science in combination.

(c) Includes maintained schools only.

(a) Gweler tabl 1.1 am ddata hanesyddol a thabl 1.2 am ddata targedau cyrhaeddiad 2008.

(b) Mae'r dangosydd pynciau craidd yn cynrychioli canran y disgyblion a gyflawnodd lefel 2 neu'n uwch mewn Saesneg neu'r Gymraeg (iaith cyntaf), mathemateg a gwyddoniaeth gyda'i gilydd.

(c) Yn cynnwys ysgolion a gynhelir yn unig.

NATIONAL CURRICULUM ASSESSMENTS: LEA INFORMATION
ASESIADAU'R CWRICWLWM CENEDLAETHOL: GWYBODAETH AALI

3.2 Key Stage 2 teacher assessment results, by LEA, 2008 (a)

Canlyniadau asemiadau athrawon Cyfnod Allweddol 2, yn ôl AALI, 2008 (a)

	Percentage of pupils achieving expected level (Level 4+) Canran o ddisgyblion yn cyrraedd y lefel disgwyliedig (Lefel 4+)				Percentage of pupils achieving the Core Subject Indicator (b) Canran o ddisgyblion yn ennill y Dangosydd Pynciau Craidd (b)	
	English	Welsh	Mathematics	Science		
	Saesneg	Cymraeg	Mathemateg	Gwyddoniaeth		
Isle of Anglesey	82	62	83	87	78	Ynys Môn
Gwynedd	80	78	81	84	77	Gwynedd
Conwy	83	86	84	88	78	Conwy
Denbighshire	82	84	82	86	77	Sir Ddinbych
Flintshire	82	82	84	89	78	Sir y Fflint
Wrexham	81	81	82	86	76	Wrecsam
Powys	81	77	83	88	77	Powys
Ceredigion	81	73	78	86	73	Ceredigion
Pembrokeshire	81	81	81	85	76	Sir Benfro
Carmarthenshire	79	73	79	83	73	Sir Gaerfyrddin
Swansea	78	74	81	84	74	Abertawe
Neath Port Talbot	76	77	79	84	73	Castell-Nedd Port Talbot
Bridgend	81	81	83	87	77	Pen-y-Bont ar Ogwr
The Vale of Glamorgan	83	81	85	88	79	Bro Morgannwg
Rhondda Cynon Taff	77	82	80	83	73	Rhondda Cynon Taf
Merthyr Tydfil	75	83	77	81	71	Merthyr Tudful
Caerphilly	77	80	80	85	73	Caerffili
Blaenau Gwent	75	93	76	84	69	Blaenau Gwent
Torfaen	82	89	82	87	77	Tor-faen
Monmouthshire	84	100	86	90	79	Sir Fynwy
Newport	84	94	84	89	80	Casnewydd
Cardiff	81	84	82	87	77	Caerdydd
Wales (c)	80	77	81	86	75	Cymru (c)
England (c)	78	.	79	85	..	Lloegr (c)

(a) See table 1.3 for historical data and table 1.4 for 2008 assessment target data.

(b) The core subject indicator represents the percentage of pupils achieving level 4 or above in English or Welsh (first language), mathematics and science in combination.

(c) Includes maintained schools only.

(a) Gweler tabl 1.3 am ddata hanesyddol a thabl 1.4 am ddata targedau cyrhaeddiad 2008.

(b) Mae'r dangosydd pynciau craidd yn cynrychioli canran y disgyblion a gyflawnodd lefel 4 neu'n uwch mewn Saesneg neu'r Gymraeg (iaith cyntaf), mathemateg a gwyddoniaeth gyda'i gilydd.

(c) Yn cynnwys ysgolion a gynhelir yn unig.

NATIONAL CURRICULUM ASSESSMENTS: LEA INFORMATION
 ASESIAU'R CWRICWLWM CENEDLAETHOL: GWYBODAETH AALI

**3.3 Key Stage 3 teacher assessment
 results, by LEA, 2008 (a)**

**Canlyniadau asemiadau athrawon Cyfnod
 Allweddol 3, yn ôl AALI, 2008 (a)**

	Percentage of pupils achieving expected level (Level 5+) Canran o ddisgyblion yn cyrraedd y lefel disgwylidig (Lefel 5+)				Percentage of pupils achieving the Core Subject Indicator (b)	
	English	Welsh	Mathematics	Science	Canran o ddisgyblion yn ennill y Dangosydd	
	Saesneg	Cymraeg	Mathemateg	Gwyddoniaeth	Pynciau Craidd (b)	
Isle of Anglesey	69	68	74	74	62	Ynys Môn
Gwynedd	72	75	75	76	65	Gwynedd
Conwy	75	67	76	74	61	Conwy
Denbighshire	71	74	74	75	59	Sir Ddinbych
Flintshire	76	61	77	78	65	Sir y Fflint
Wrexham	70	81	71	71	60	Wrecsam
Powys	77	81	78	76	65	Powys
Ceredigion	68	64	72	76	58	Ceredigion
Pembrokeshire	72	74	73	75	61	Sir Benfro
Carmarthenshire	73	70	73	76	62	Sir Gaerfyrddin
Swansea	69	82	73	73	59	Abertawe
Neath Port Talbot	66	77	73	73	60	Castell-Nedd Port Talbot
Bridgend	69	.	71	73	58	Pen-y-Bont ar Ogwr
The Vale of Glamorgan	70	81	76	80	63	Bro Morgannwg
Rhondda Cynon Taff	64	69	67	67	54	Rhondda Cynon Taf
Merthyr Tydfil	68	.	64	66	52	Merthyr Tudful
Caerphilly	62	63	69	69	52	Caerffili
Blaenau Gwent	58	.	66	65	47	Blaenau Gwent
Torfaen	65	74	71	78	58	Tor-faen
Monmouthshire	75	.	80	79	67	Sir Fynwy
Newport	72	.	73	77	62	Casnewydd
Cardiff	71	83	72	74	62	Caerdydd
Wales (c)	69	72	72	74	60	Cymru (c)
England (c)	76	.	79	77	..	Lloegr (c)

(a) See table 1.5 for historical data.

(b) The core subject indicator represents the percentage of pupils achieving level 5 or above in English or Welsh (first language), mathematics and science in combination.

(c) Includes maintained schools only.

(a) Gweler tabl 1.5 am ddata hanesyddol.

(b) Mae'r dangosydd pynciau craidd yn cynrychioli canran y disgyblion a gyflawnodd lefel 5 neu'n uwch mewn Saesneg neu'r Gymraeg (iaith cyntaf), mathemateg a gwyddoniaeth gyda'i gilydd.

(c) Yn cynnwys ysgolion a gynhelir yn unig.

NATIONAL CURRICULUM ASSESSMENTS: LEA INFORMATION
 ASESIAU'R CWRICWLWM CENEDLAETHOL: GWYBODAETH AALI

**3.4 Key Stage 3 teacher assessment in the non core subjects,
 by LEA, 2008 (a)**

Per cent

	Percentage of pupils achieving expected level (Level 5+)			
	Canran o ddisgyblion yn cyrraedd y lefel disgwylidig (Lefel 5+)			
	Art	Design and Technology Dylunio a Thechnoleg	Geography Daearyddiaeth	History Hanes
	Celf			
Isle of Anglesey	77	73	72	69
Gwynedd	75	75	76	77
Conwy	81	76	78	81
Denbighshire	77	83	75	76
Flintshire	83	84	82	81
Wrexham	68	71	75	67
Powys	85	83	80	77
Ceredigion	78	75	75	74
Pembrokeshire	79	79	78	77
Carmarthenshire	75	75	74	71
Swansea	79	77	71	69
Neath Port Talbot	82	78	67	72
Bridgend	76	76	69	69
The Vale of Glamorgan	80	83	80	74
Rhondda Cynon Taff	67	67	62	66
Merthyr Tydfil	65	65	69	63
Caerphilly	65	71	68	70
Blaenau Gwent	76	70	61	60
Torfaen	73	65	68	69
Monmouthshire	69	71	68	80
Newport	77	75	68	67
Cardiff	75	76	73	74
Wales (b)	75	75	72	72
England (b)	79	79	77	77

(a) See table 1.6 for historical data.

(b) Includes maintained schools only.

NATIONAL CURRICULUM ASSESSMENTS: LEA INFORMATION
 ASESIAU'R CWRICWLWM CENEDLAETHOL: GWYBODAETH AALI

**Canlyniadau asesiadau athrawon Cyfnod Allweddol 3 yn y pynciau di-graidd,
 yn ôl AALI, 2008 (a)**

Canran

Percentage of pupils achieving expected level (Level 5+)					
Canran o ddisgyblion yn cyrraedd y lefel disgwylidig (Lefel 5+)					
Information Technology Technoleg Gwybodaeth	Modern Foreign Language Iaith Dramor Fodern	Music Cerddoriaeth	Physical Education Addysg Gorfforol	Welsh 2nd Language Cymraeg Ail Iaith	
76	67	62	67	39	Ynys Môn
81	56	71	74	55	Gwynedd
79	67	77	77	59	Conwy
75	68	75	77	62	Sir Ddinbych
81	73	75	70	58	Sir y Fflint
80	61	66	70	59	Wrecsam
86	70	78	82	64	Powys
89	55	75	64	43	Ceredigion
76	61	70	75	58	Sir Benfro
73	66	73	64	52	Sir Gaerfyrddin
81	61	77	72	43	Abertawe
76	62	70	73	64	Castell-Nedd Port Talbot
72	53	67	77	53	Pen-y-Bont ar Ogwr
82	63	77	70	61	Bro Morgannwg
66	61	66	71	50	Rhondda Cynon Taf
76	51	65	61	53	Merthyr Tudful
74	55	66	71	49	Caerffili
72	62	77	70	47	Blaenau Gwent
73	53	71	71	41	Tor-faen
77	73	82	85	59	Sir Fynwy
72	59	71	78	55	Casnewydd
78	60	70	67	55	Caerdydd
76	62	71	72	54	Cymru (b)
78	60	76	81	.	Lloegr (b)

(a) Gweler tabl 1.6 am ddata hanesyddol.

(b) Yn cynnwys ysgolion a gynhelir yn unig.

Public Examinations: LEA Information

The data contained in the tables in this section are extracted from the Welsh Assembly Government School Performance Information which records the achievements of candidates entering examinations at recognised examination centres in Wales. A more detailed description of the data can be found in the Glossary.

All data in this section relate to the examination achievements of full-time candidates of any age (unless otherwise stated) who entered an examination at maintained schools in Wales only. Ages relate to pupils' age as at 31 August prior to the start of the academic year. Note that in "Schools in Wales: Examination Performance 2001" the ages were referred to as at the **end** of the academic year.

The Wales total is the sum of all maintained schools in Wales, and hence may differ from that found in chapter 2 which includes all schools. Part-time and external candidates are not included and neither are students taking examinations at Further Education Institutions.

Arholiadau Cyhoeddus: Gwybodaeth AALI

Mae'r data sydd wedi'u cynnwys yn y tablau yn yr adran hon wedi'u tynnu o wybodaeth Perfformiad Ysgolion Llywodraeth Cynulliad Cymru sy'n cofnodi cyraeddiadau ymgeiswyr sy'n sefyll arholiadau mewn canolfannau arholiadau cydnabyddedig yng Nghymru. Mae disgrifiad llawnach o'r data i'w weld yn yr Eirfa.

Mae'r holl ddata yn yr adran hon yn ymwneud â chyrhaeddiad ymgeiswyr llawn-amser o unrhyw oedran (oni nodir yn wahanol) a gofrestrodd am arholiad mewn unrhyw ysgol a gynhelir yng Nghymru yn unig. Oedrannau ar 31 Awst cyn dechrau'r flwyddyn academiaidd. Nodir mai oedrannau ar **ddiwedd** y flwyddyn academiaidd a ddefnyddiwyd yn "Ysgolion yng Nghymru: Perfformiad mewn Arholiadau 2001".

Swm yr holl ysgolion a gynhelir yng Nghymru yw'r cyfanswm ar gyfer Cymru gyfan, ac fe allai fod yn wahanol i'r hyn a geir ym Mhennod 2, sy'n cynnwys pob ysgol. Nid yw ymgeiswyr rhan-amser nac allanol wedi'u cynnwys, na myfyrwyr sy'n sefyll arholiadau mewn Sefydliadau Addysg Bellach.

PUBLIC EXAMINATIONS: LEA INFORMATION
 ARHOLIADAU CYHOEDDUS: GWYBODAETH AALI

4.1 Examination entries and achievements of pupils aged 15, by LEA, comparison with England, 2007/08 (a) (b)

	Number of pupils aged 15	Percentage of pupils aged 15 who achieved... Canran y disgyblion 15 oed a enillodd...			
		Level 1 threshold	Level 2 threshold	Level 2 threshold including a GCSE grade A*-C in English or Welsh first language and mathematics	Average wider points score
	Nifer y disgyblion 15 oed	trothwy Lefel 1	trothwy Lefel 2	trothwy Lefel 2 gan gynnwys gradd TGAU A*-C mewn Saesneg neu Gymraeg iaith gyntaf a mathemateg	Sgôr pwyntiau cyfartalog eang
Pupils:					
Isle of Anglesey	805	88	58	42	351
Gwynedd	1,494	89	62	51	375
Conwy	1,363	86	60	45	351
Denbighshire	1,386	84	52	40	326
Flintshire	1,920	90	57	45	348
Wrexham	1,420	88	54	42	366
Powys	1,641	92	67	56	388
Ceredigion	839	90	62	48	395
Pembrokeshire	1,540	87	61	49	375
Carmarthenshire	2,287	89	62	50	380
Swansea	2,800	87	58	50	343
Neath Port Talbot	1,794	90	63	51	362
Bridgend	1,705	87	56	43	359
The Vale of Glamorgan	1,683	91	69	51	428
Rhondda Cynon Taf	3,144	84	53	37	340
Merthyr Tydfil	757	82	46	34	320
Caerphilly	2,409	86	52	41	332
Blaenau Gwent	916	81	46	31	299
Torfaen	1,418	87	57	41	351
Monmouthshire	993	88	58	47	353
Newport	1,831	85	55	43	339
Cardiff	3,879	85	56	44	343
Wales (e)	39,027	87	58	46	356
England (f)	653,808	91	65	47	387

- (a) Ages as at 31 August prior to the start of the academic year. Includes results for 15 year old pupils, in maintained schools, achieved during the academic year and any examinations taken at an earlier age. See table 2.1 for historical data.
- (b) Includes all qualifications approved for pre-16 use in Wales.
- (c) Core Subject Indicator: achieved the Level 2 threshold in each of English or Welsh first language, mathematics or science.
- (d) ELQ: Entry Level Qualification.
- (e) Includes independent schools and pupils from a non-English or Welsh background education.
- (f) Includes all qualifications approved for pre-16 use in England.

Cofrestrïadau a chyraeddiadau arholiad disgyblion 15 oed, yn ôl AALI a chymharu gyda Lloegr, 2007/08 (a) (b)

Percentage of pupils aged 15 who achieved...					
Canran y disgyblion 15 oed a enillodd...					
Level 2 threshold in each of the core subjects (c)	at least one qualification	no graded result in a recognised qualification	1 or more ELQ only (d)	five or more GCSEs grade A*-C or vocational equivalent	
trothwy Lefel 2 ym mhob un o'r pynciau craidd (c)	o leiaf un cymhwyster	dim gradd mewn cymhwyster cydnabyddedig	1 neu ragor ELQ yn unig (d)	5 neu fwy TGAU gradd A*-C neu gymhwyster cyfwerth	
					Disgyblion:
41	97	3	1	58	Ynys Môn
50	99	1	2	62	Gwynedd
44	99	1	4	58	Conwy
40	98	2	4	51	Sir Ddinbych
45	97	3	1	57	Sir y Fflint
40	100	0	6	52	Wrecsam
55	97	3	1	65	Powys
47	99	1	4	61	Ceredigion
48	98	2	2	58	Sir Benfro
48	98	2	1	61	Sir Gaerfyrddin
49	97	3	2	58	Abertawe
49	98	2	1	62	Castell-nedd Port Talbot
42	99	1	4	54	Pen-y-bont ar Ogwr
49	99	1	2	62	Bro Morgannwg
36	96	4	4	47	Rhondda Cynon Taf
33	98	2	4	40	Merthyr Tudful
39	98	2	2	51	Caerffili
30	94	6	2	45	Blaenau Gwent
40	94	6	1	49	Tor-faen
46	97	3	3	57	Sir Fynwy
40	98	2	3	53	Casnewydd
43	97	3	3	54	Caerdydd
44	98	2	3	56	Cymru (e)
..	98	2	Lloegr (f)

- (a) Oedrannau ar 31 Awst cyn dechrau'r flwyddyn academaidd. Yn cynnwys canlyniadau disgyblion 15 oed mewn ysgoilion a gynhelir, yn ystod y flwyddyn academaidd ac unrhyw arholiadau a gymerwyd yn gynharach. Gweler tabl 2.1 am ddata hanesyddol.
- (b) Yn cynnwys pob cymhwyster cydnabyddedig i ddisgyblion o dan 16 mlwydd oed yng Nghymru.
- (c) Dangosydd Pynciau Craidd: cyflawnodd drothwy Lefel 2 mewn Saesneg neu Gymraeg iaith gyntaf, mathemateg a gwyddoniaeth.
- (d) ELQ: Cymhwyster Lefel Mynediad.
- (e) Yn cynnwys ysgolion annibynnol a disgyblion o system addysg nad yw'n seiliedig ar y Gymraeg na'r Saesneg.
- (f) Yn cynnwys pob cymhwyster cydnabyddedig i ddisgyblion o dan 16 mlwydd oed yn Lloegr.

PUBLIC EXAMINATIONS: LEA INFORMATION
 ARHOLIADAU CYHOEDDUS: GWYBODAETH AALI

4.1 (continued) Examination entries and achievements of pupils aged 15, by LEA, comparison with England, 2007/08 (a) (b)

	Number of pupils aged 15	Percentage of pupils aged 15 who achieved... Canran y disgyblion 15 oed a enillodd...				Average wider points score
		Level 1 threshold	Level 2 threshold	Level 2 threshold including a GCSE grade A*-C in English or Welsh first language and mathematics		
	Nifer y disgyblion 15 oed	trothwy Lefel 1	trothwy Lefel 2	trothwy Lefel 2 gan gynnwys gradd TGAU A*-C mewn Saesneg neu Gymraeg iaith gyntaf a mathemateg	Sgôr pwyntiau cyfartalog eang	
Boys:						
Isle of Anglesey	389	86	51	37	324	
Gwynedd	775	86	57	47	348	
Conwy	681	81	55	43	328	
Denbighshire	684	82	45	35	304	
Flintshire	1,013	89	54	42	333	
Wrexham	714	86	49	40	350	
Powys	853	90	61	52	363	
Ceredigion	428	86	51	40	359	
Pembrokeshire	749	84	53	42	344	
Carmarthenshire	1,188	87	56	44	352	
Swansea	1,422	84	53	47	321	
Neath Port Talbot	931	87	58	46	340	
Bridgend	895	86	52	40	342	
The Vale of Glamorgan	830	90	68	49	436	
Rhondda Cynon Taf	1,647	80	46	35	314	
Merthyr Tydfil	386	78	40	29	297	
Caerphilly	1,204	82	46	37	304	
Blaenau Gwent	458	77	40	26	273	
Torfaen	719	82	49	36	319	
Monmouthshire	506	86	50	41	329	
Newport	930	83	50	38	324	
Cardiff	1,996	82	52	42	327	
Wales (e)	19,937	84	53	42	334	
England (f)	334,579	89	60	43	368	

- (a) Ages as at 31 August prior to the start of the academic year. Includes results for 15 year old pupils, in maintained schools, achieved during the academic year and any examinations taken at an earlier age. See table 2.1 for historical data.
- (b) Includes all qualifications approved for pre-16 use in Wales.
- (c) Core Subject Indicator: achieved the Level 2 threshold in each of English or Welsh first language, mathematics or science.
- (d) ELQ: Entry Level Qualification.
- (e) Includes independent schools and pupils from a non-English or Welsh background education.
- (f) Includes all qualifications approved for pre-16 use in England.

(parhad) Cofrestradau a chyraeddiadau arholiad disgyblion 15 oed, yn ôl AALI a chymharu gyda Lloegr, 2007/08 (a) (b)

Percentage of pupils aged 15 who achieved...					
Canran y disgyblion 15 oed a enillodd...					
Level 2 threshold in each of the core subjects (c)	at least one qualification	no graded result in a recognised qualification	1 or more ELQ only (d)	five or more GCSEs grade A*-C or vocational equivalent	
trothwy Lefel 2 ym mhob un o'r pynciau craidd (c)	o leiaf un cymhwyster	dim gradd mewn cymhwyster cydnabyddedig	1 neu ragor ELQ yn unig (d)	5 neu fwy TGAU gradd A*-C neu gymhwyster cyfwerth	
					Bechgyn:
37	96	4	1	51	Ynys Môn
47	98	2	2	57	Gwynedd
42	99	1	5	53	Conwy
35	98	2	6	44	Sir Ddinbych
43	97	3	1	54	Sir y Fflint
39	100	0	8	48	Wrecsam
51	97	3	2	60	Powys
41	99	1	5	51	Ceredigion
42	97	3	3	50	Sir Benfro
44	98	2	1	54	Sir Gaerfyrddin
47	96	4	3	52	Abertawe
45	96	4	1	56	Castell-nedd Port Talbot
39	99	1	5	49	Pen-y-bont ar Ogwr
48	100	-	3	57	Bro Morgannwg
34	95	5	5	41	Rhondda Cynon Taf
29	97	3	7	35	Merthyr Tudful
35	97	3	2	46	Caerffili
26	92	8	3	39	Blaenau Gwent
36	92	8	1	43	Tor-faen
41	97	3	5	50	Sir Fynwy
36	97	3	4	48	Casnewydd
41	96	4	4	50	Caerdydd
41	97	3	3	50	Cymru (e)
..	98	3	Lloegr (f)

- (a) Oedrannau ar 31 Awst cyn dechrau'r flwyddyn academaidd. Yn cynnwys canlyniadau disgyblion 15 oed mewn ysgoilion a gynhelir, yn ystod y flwyddyn academaidd ac unrhyw arholiadau a gymerwyd yn gynharach. Gweler tabl 2.1 am ddata hanesyddol.
- (b) Yn cynnwys pob cymhwyster cydnabyddedig i ddisgyblion o dan 16 mlwydd oed yng Nghymru.
- (c) Dangosydd Pynciau Craidd: cyflawnodd drothwy Lefel 2 mewn Saesneg neu Gymraeg iaith gyntaf, mathemateg a gwyddoniaeth.
- (d) ELQ: Cymhwyster Lefel Mynediad.
- (e) Yn cynnwys ysgolion annibynnol a disgyblion o system addysg nad yw'n seiliedig ar y Gymraeg na'r Saesneg.
- (f) Yn cynnwys pob cymhwyster cydnabyddedig i ddisgyblion o dan 16 mlwydd oed yn Lloegr.

PUBLIC EXAMINATIONS: LEA INFORMATION
 ARHOLIADAU CYHOEDDUS: GWYBODAETH AALI

4.1 (continued) Examination entries and achievements of pupils aged 15, by LEA, comparison with England, 2007/08 (a) (b)

	Number of pupils aged 15	Percentage of pupils aged 15 who achieved... Canran y disgyblion 15 oed a enillodd...			
		Level 1 threshold	Level 2 threshold	Level 2 threshold including a GCSE grade A*-C in English or Welsh first language and mathematics	Average wider points score
	Nifer y disgyblion 15 oed	trothwy Lefel 1	trothwy Lefel 2	trothwy Lefel 2 gan gynnwys gradd TGAU A*-C mewn Saesneg neu Gymraeg iaith gyntaf a mathemateg	Sgôr pwyntiau cyfartalog eang
Girls:					
Isle of Anglesey	416	91	63	47	376
Gwynedd	719	93	68	55	405
Conwy	682	90	66	47	373
Denbighshire	702	87	58	46	349
Flintshire	907	91	61	48	364
Wrexham	706	90	58	45	381
Powys	788	94	72	61	414
Ceredigion	411	93	72	55	432
Pembrokeshire	791	90	69	55	405
Carmarthenshire	1,099	92	69	56	410
Swansea	1,378	89	63	54	365
Neath Port Talbot	863	92	70	57	385
Bridgend	810	89	61	46	378
The Vale of Glamorgan	853	93	69	52	421
Rhondda Cynon Taf	1,497	88	60	40	368
Merthyr Tydfil	371	87	52	39	345
Caerphilly	1,205	90	58	45	359
Blaenau Gwent	458	85	52	36	324
Torfaen	699	91	64	47	385
Monmouthshire	487	91	66	54	379
Newport	901	87	60	47	354
Cardiff	1,883	88	59	46	361
Wales (e)	19,090	90	63	50	379
England (f)	319,229	93	69	52	408

- (a) Ages as at 31 August prior to the start of the academic year. Includes results for 15 year old pupils, in maintained schools, achieved during the academic year and any examinations taken at an earlier age. See table 2.1 for historical data.
- (b) Includes all qualifications approved for pre-16 use in Wales.
- (c) Core Subject Indicator: achieved the Level 2 threshold in each of English or Welsh first language, mathematics or science.
- (d) ELQ: Entry Level Qualification.
- (e) Includes independent schools and pupils from a non-English or Welsh background education.
- (f) Includes all qualifications approved for pre-16 use in England.

(parhad) Cofrestriadau a chyraeddiadau arholiad disgyblion 15 oed, yn ôl AALI a chymharu gyda Lloegr, 2007/08 (a) (b)

Percentage of pupils aged 15 who achieved...					
Canran y disgyblion 15 oed a enillodd...					
Level 2 threshold in each of the core subjects (c)	at least one qualification	no graded result in a recognised qualification	1 or more ELQ only (d)	five or more GCSEs grade A*-C or vocational equivalent	
trothwy Lefel 2 ym mhob un o'r pynciau craidd (c)	o leiaf un cymhwyster	dim gradd mewn cymhwyster cydnabyddedig	1 neu ragor ELQ yn unig (d)	5 neu fwy TGAU gradd A*-C neu gymhwyster cyfwerth	
					Merched:
45	97	3	-	63	Ynys Môn
53	99	1	1	68	Gwynedd
46	100	0	3	64	Conwy
45	98	2	3	57	Sir Ddinbych
48	97	3	1	60	Sir y Fflint
42	100	0	4	56	Wrecsam
60	98	2	-	71	Powys
54	99	1	2	72	Ceredigion
53	98	2	2	67	Sir Benfro
54	98	2	1	69	Sir Gaerfyrddin
52	97	3	2	63	Abertawe
53	99	1	2	68	Castell-nedd Port Talbot
44	98	2	2	58	Pen-y-bont ar Ogwr
51	99	1	2	67	Bro Morgannwg
39	98	2	2	54	Rhondda Cynon Taf
37	99	1	2	46	Merthyr Tudful
43	99	1	1	56	Caerffili
35	96	4	2	51	Blaenau Gwent
44	97	3	-	55	Tor-faen
52	97	3	1	65	Sir Fynwy
44	99	1	3	58	Casnewydd
45	98	2	2	58	Caerdydd
48	98	2	2	61	Cymru (e)
..	99	1	Lloegr (f)

- (a) Oedrannau ar 31 Awst cyn dechrau'r flwyddyn academaidd. Yn cynnwys canlyniadau disgyblion 15 oed mewn ysgoilion a gynhelir, yn ystod y flwyddyn academaidd ac unrhyw arholiadau a gymerwyd yn gynharach. Gweler tabl 2.1 am ddata hanesyddol.
- (b) Yn cynnwys pob cymhwyster cydnabyddedig i ddisgyblion o dan 16 mlwydd oed yng Nghymru.
- (c) Dangosydd Pynciau Craidd: cyflawnodd drothwy Lefel 2 mewn Saesneg neu Gymraeg iaith gyntaf, mathemateg a gwyddoniaeth.
- (d) ELQ: Cymhwyster Lefel Mynediad.
- (e) Yn cynnwys ysgolion annibynnol a disgyblion o system addysg nad yw'n seiliedig ar y Gymraeg na'r Saesneg.
- (f) Yn cynnwys pob cymhwyster cydnabyddedig i ddisgyblion o dan 16 mlwydd oed yn Lloegr.

PUBLIC EXAMINATIONS: LEA INFORMATION
 ARHOLIADAU CYHOEDDUS: GWYBODAETH AALI

**4.2 Examination entries and achievements of pupils aged 17,
 by LEA, 2007/08 (a) (b)**

	Number of pupils aged 17 entering a volume equivalent to 2 A levels	Percentage of 17 year old pupils entering a volume equivalent to 2 A levels who achieved the Level 3 threshold
	Nifer y disgyblion 17 oed a gofrestrodd am gyfaint o ddysgu yn gyfartal i 2 lefel A	Canran y disgyblion 17 oed a gofrestrodd am gyfaint o ddysgu yn gyfartal i 2 lefel A ac yn ennill y trothwy lefel 3
Pupils:		
Isle of Anglesey	251	97
Gwynedd	325	94
Conwy	398	94
Denbighshire	354	91
Flintshire	570	94
Wrexham	119	96
Powys	573	97
Ceredigion	364	94
Pembrokeshire	540	95
Carmarthenshire	612	96
Swansea	485	93
Neath Port Talbot	125	100
Bridgend	629	91
The Vale of Glamorgan	643	96
Rhondda Cynon Taf	1,020	93
Merthyr Tydfil	217	91
Caerphilly	459	96
Blaenau Gwent	208	91
Torfaen	356	96
Monmouthshire	369	93
Newport	643	91
Cardiff	1,107	94
Wales (c)	10,943	94

(a) Ages at 31 August prior to the start of the academic year. See table 2.2 for historical data.

(b) Includes all qualifications approved for use in Wales.

(c) Includes independent schools, but excludes further education institutions.

**Cofrestriadau a chyraeddiadau arholiad disgyblion 17 oed,
 yn ôl AALI, 2007/08 (a) (b)**

Number of pupils aged 17	Average wider points score for pupils aged 17	
Nifer y disgyblion 17 oed	Sgor bwyntiau gyfartalog eang am bob disgybl 17 oed	Disgyblion:
261	680	Ynys Môn
333	705	Gwynedd
467	640	Conwy
424	564	Sir Ddinbych
698	576	Sir y Fflint
165	629	Wrecsam
609	698	Powys
414	659	Ceredigion
590	692	Sir Benfro
686	682	Sir Gaerfyrddin
587	569	Abertawe
157	604	Castell-nedd Port Talbot
704	629	Pen-y-bont ar Ogwr
720	734	Bro Morgannwg
1,286	542	Rhondda Cynon Taf
276	532	Merthyr Tudful
508	620	Caerffili
234	585	Blaenau Gwent
425	591	Tor-faen
404	639	Sir Fynwy
695	642	Casnewydd
1,323	623	Caerdydd
12,653	631	Cymru (c)

- (a) Oedrannau ar 31 Awst cyn dechrau'r flwyddyn academaidd. Gweler tabl 2.2 am ddata hanesyddol.
 (b) Yn cynnwys pob cymhwyster cydnabyddedig yng Nghymru.
 (c) Yn cynnwys ysgolion annibynnol, ond nid sefydliadau addysg bellach.

PUBLIC EXAMINATIONS: LEA INFORMATION
 ARHOLIADAU CYHOEDDUS: GWYBODAETH AALI

**4.2 (continued) Examination entries and achievements of pupils aged 17,
 by LEA, 2007/08 (a) (b)**

	Number of pupils aged 17 entering a volume equivalent to 2 A levels	Percentage of 17 year old pupils entering a volume equivalent to 2 A levels who achieved the Level 3 threshold
	Nifer y disgyblion 17 oed a gofrestrodd am gyfaint o ddysgu yn gyfartal i 2 lefel A	Canran y disgyblion 17 oed a gofrestrodd am gyfaint o ddysgu yn gyfartal i 2 lefel A ac yn ennill y trothwy lefel 3
Boys:		
Isle of Anglesey	95	95
Gwynedd	153	91
Conwy	168	92
Denbighshire	134	89
Flintshire	255	93
Wrexham	60	93
Powys	246	95
Ceredigion	157	94
Pembrokeshire	223	92
Carmarthenshire	257	95
Swansea	231	93
Neath Port Talbot	47	100
Bridgend	255	90
The Vale of Glamorgan	285	95
Rhondda Cynon Taf	453	91
Merthyr Tydfil	95	92
Caerphilly	192	94
Blaenau Gwent	82	90
Torfaen	159	96
Monmouthshire	152	89
Newport	292	88
Cardiff	524	92
Wales (c)	4,790	93

(a) Ages at 31 August prior to the start of the academic year. See table 2.2 for historical data.

(b) Includes all qualifications approved for use in Wales.

(c) Includes independent schools, but excludes further education institutions.

**(parhad) Cofrestriadau a chyraeddiadau arholiad disgyblion 17 oed,
 yn ôl AALI, 2007/08 (a) (b)**

Number of pupils aged 17	Average wider points score for pupils aged 17	
Nifer y disgyblion 17 oed	Sgor bwyntiau gyfartalog eang am bob disgybl 17 oed	Bechgyn:
97	667	Ynys Môn
155	706	Gwynedd
201	608	Conwy
170	508	Sir Ddinbych
320	542	Sir y Fflint
88	561	Wrecsam
269	659	Powys
183	645	Ceredigion
248	650	Sir Benfro
302	627	Sir Gaerfyrddin
298	520	Abertawe
58	636	Castell-nedd Port Talbot
301	592	Pen-y-bont ar Ogwr
320	717	Bro Morgannwg
580	516	Rhondda Cynon Taf
123	522	Merthyr Tudful
210	606	Caerffili
97	547	Blaenau Gwent
200	533	Tor-faen
173	574	Sir Fynwy
323	578	Casnewydd
622	608	Caerdydd
5,673	596	Cymru (c)

- (a) Oedrannau ar 31 Awst cyn dechrau'r flwyddyn academaidd. Gweler tabl 2.2 am ddata hanesyddol.
 (b) Yn cynnwys pob cymhwyster cydnabyddedig yng Nghymru.
 (c) Yn cynnwys ysgolion annibynnol, ond nid sefydliadau addysg bellach.

PUBLIC EXAMINATIONS: LEA INFORMATION
 ARHOLIADAU CYHOEDDUS: GWYBODAETH AALI

**4.2 (continued) Examination entries and achievements of pupils aged 17,
 by LEA, 2007/08 (a) (b)**

	Number of pupils aged 17 entering a volume equivalent to 2 A levels	Percentage of 17 year old pupils entering a volume equivalent to 2 A levels who achieved the Level 3 threshold
	Nifer y disgyblion 17 oed a gofrestrodd am gyfaint o ddysgu yn gyfartal i 2 lefel A	Canran y disgyblion 17 oed a gofrestrodd am gyfaint o ddysgu yn gyfartal i 2 lefel A ac yn ennill y trothwy lefel 3
Girls:		
Isle of Anglesey	156	99
Gwynedd	172	96
Conwy	230	96
Denbighshire	220	92
Flintshire	315	95
Wrexham	59	98
Powys	327	98
Ceredigion	207	94
Pembrokeshire	317	97
Carmarthenshire	355	97
Swansea	254	94
Neath Port Talbot	78	100
Bridgend	374	92
The Vale of Glamorgan	358	96
Rhondda Cynon Taf	567	95
Merthyr Tydfil	122	90
Caerphilly	267	98
Blaenau Gwent	126	92
Torfaen	197	95
Monmouthshire	217	95
Newport	351	94
Cardiff	583	95
Wales (c)	6,153	95

(a) Ages at 31 August prior to the start of the academic year. See table 2.2 for historical data.

(b) Includes all qualifications approved for use in Wales.

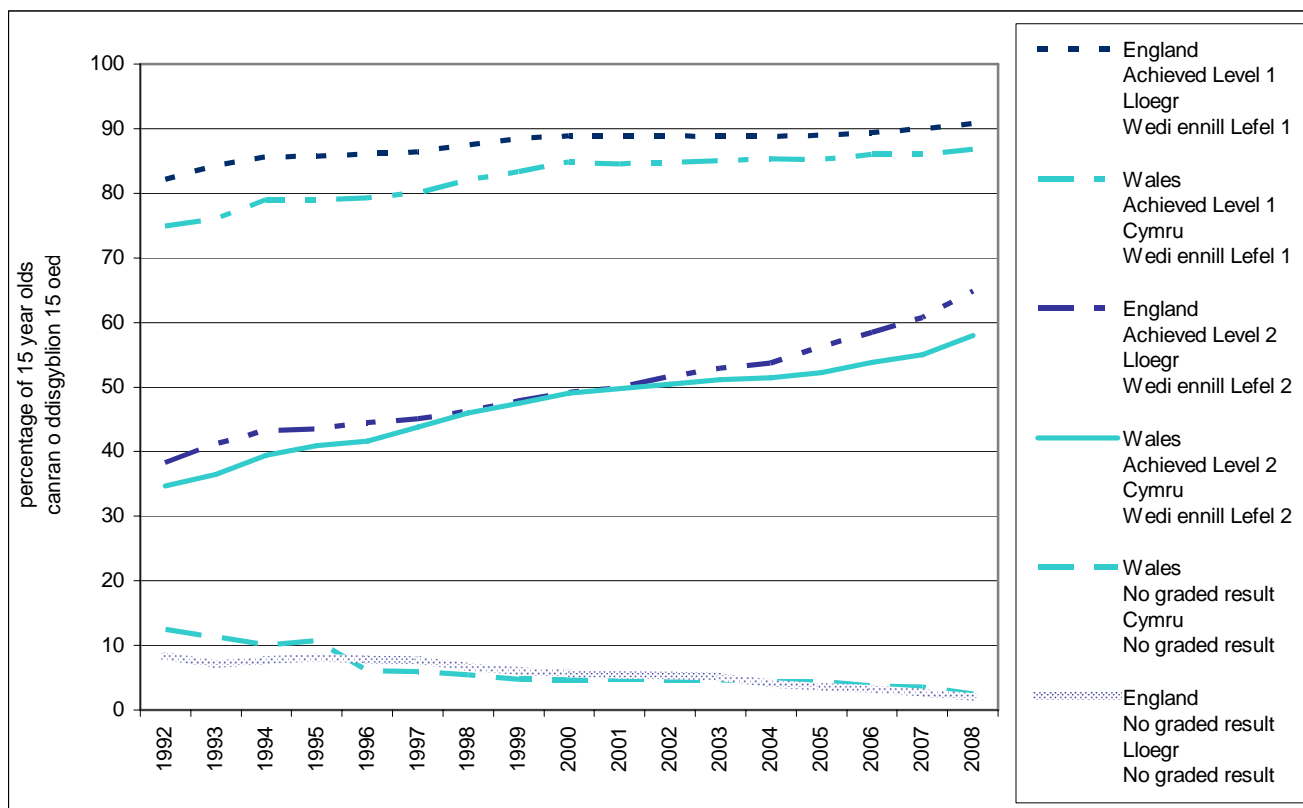
(c) Includes independent schools, but excludes further education institutions.

**(parhad) Cofrestriadau a chyraeddiadau arholiad disgyblion 17 oed,
 yn ôl AALI, 2007/08 (a) (b)**

Number of pupils aged 17	Average wider points score for pupils aged 17	
Nifer y disgyblion 17 oed	Sgor bwyntiau gyfartalog eang am bob disgybl 17 oed	Merched:
164	687	Ynys Môn
178	704	Gwynedd
266	664	Conwy
254	601	Sir Ddinbych
378	605	Sir y Fflint
77	707	Wrecsam
340	729	Powys
231	669	Ceredigion
342	722	Sir Benfro
384	726	Sir Gaerfyrddin
289	618	Abertawe
99	586	Castell-nedd Port Talbot
403	657	Pen-y-bont ar Ogwr
400	748	Bro Morgannwg
706	563	Rhondda Cynon Taf
153	540	Merthyr Tudful
298	629	Caerffili
137	613	Blaenau Gwent
225	642	Tor-faen
231	688	Sir Fynwy
372	697	Casnewydd
701	636	Caerdydd
6,980	659	Cymru (c)

- (a) Oedrannau ar 31 Awst cyn dechrau'r flwyddyn academaidd. Gweler tabl 2.2 am ddata hanesyddol.
 (b) Yn cynnwys pob cymhwyster cydnabyddedig yng Nghymru.
 (c) Yn cynnwys ysgolion annibynnol, ond nid sefydliadau addysg bellach.

Examination achievements of pupils aged 15 (a) (b) (c) **Cyraeddiadau arholiadau disgyblion 15 oed (a) (b) (c)**



- (a) Ages at 31 August prior to the start of the academic year. Includes results for 15 year old pupils, in maintained schools and independent schools, achieved during the academic year and any examinations taken at an earlier age.
- (b) Vocational equivalent results are included from 1996/97. Since 2003/04 England figures have included a range of wider qualifications approved for pre-16 use. From 2006/07 Wales figures include all qualifications approved for pre-16 use in Wales.
- (c) See table 4.1 for local education authority data.

- (a) Oedrannau ar 31 Awst cyn dechrau'r flwyddyn academaidd. Yn cynnwys canlyniadau i ddisgyblion 15 oed, mewn ysgolion a gynhelir, ac ysgolion annibynnol, a enillwyd yn ystod y flwyddyn academaidd ac unrhyw arholiadau a gymerwyd yn gynharach.
- (b) Cynhwysir canlyniadau galwedigaethol cyfatebol o 1996/97 ymlaen. Ers 2004 mae ffigurau Lloegr yn cynnwys amrediad eang o gymwysterau ar gyfer plant dan 16 oed. O 2006/07 yn cynnwys pob cymwyster cydnabyddedig i ddisgyblion o dan 16 mlwydd oed yng Nghymru.
- (c) Gweler tabl 4.1 am ddata awdurdodau addysg lleol.

Independent schools

Schools that charge fees and may also be financed by individuals, companies or charitable institutions. All independent schools in Wales have to register with the Welsh Assembly Government.

Key Stages

The National Curriculum is applied to 4 key stages of pupil development. Broadly these are:

	<u>Pupils ages</u>	<u>Year groups</u>
Key Stage 1	5-7	1-2
Key Stage 2	7-11	3-6
Key Stage 3	11-14	7-9
Key Stage 4	14-16	10-11

Regular and systematic assessment of a pupil's on-going progress throughout compulsory schooling is an essential complement to the National Curriculum. Its primary purpose is to provide a clear picture of what pupils have achieved against individual subject attainment standards by the end of three key stages of a pupil's school life i.e. broadly ages 7, 11 and 14. The respective assessments were based on a rising scale (Levels 1 to 8, and then Exceptional Performance) of achievement.

For 7 year olds (Key Stage 1) the general expectation is that the majority of pupils will attain Level 2 in each individual subject. For 11 year olds (Key Stage 2) the expectation is that the majority of pupils will attain Level 4 in each individual subject. For 14 year olds (Key Stage 3) the general expectation is that the majority of pupils will attain Level 5 in each individual subject.

Since 2002 in Wales statutory assessment at the end of Key Stage 1 has been by means of Teacher Assessment only. Following the outcome of the Daugherty Assessment Review Group in 2004, Key Stage 2 tasks/tests were made optional in 2005 and Key Stage 3 tasks/tests were made optional in 2006. Only results for teacher assessments will be published from 2006 onwards.

Maintained schools

Schools maintained by the local education authorities, including special schools. The authorities meet their expenditure partly from general grants made by the Welsh Assembly Government and partly from council tax.

National Curriculum

Part 5 of the Education Act 1996 set out some general principles for the school curriculum. The National Curriculum comprises the following elements: core and foundation subjects which must be included in the curriculum of all pupils, attainment targets, programmes of study and arrangements for assessing pupils at or near the end of each key stage.

Points scores When calculating points score, the following scores are used:

Average Wider Points Score

The new points scoring system has been developed for England by QCA and accommodates all externally approved qualifications (pre-16 and 16-18).

For information on qualifications approved for pupils under 16 or for pupils aged 16-18 years please refer to the list of external qualifications approved under section 99 of the Learning and Skills Act 2000:

www.wales.gov.uk/educationandskills

For points score of qualifications not appearing in the list below, please refer to the National Database of Accredited Qualifications:

www.accreditedqualifications.org.uk

GLOSSARY GEIRFA

GCSE Qualifications

	A*	A	B	C	D	E	F	G
GCSE Short Course (All)	29	26	23	20	17	14	11	8
GCSE Full Course (All)	58	52	46	40	34	28	22	16
GCSE Double Award (All)	116	104	92	80	68	56	44	32

GNVQ Qualifications

	Distinction	Merit	Pass
Foundation Language Unit (Welsh Second Language)	17	14	9.5
Foundation Part 1 (All)	68	56	38
Foundation Full (All)	136	112	76
Intermediate Language Unit (Welsh Second Language)	27.5	24.5	20
Intermediate Part 1 (All)	110	98	80
Intermediate Full (All)	220	196	160

Entry Level Qualifications

	Distinction	Merit	Pass
ELQ in National Curriculum Subject	14	12	10

Key Skill Qualifications

	Pass
Level 1	18.75
Level 2	34.5
Level 3	63

NVQ Qualifications

	Level	QAN Code	Pass
Animal Care	1	10024359	140
Hairdressing	1	10032435	140
Horticulture	1	10023926	168

BTEC First Diplomas (Edexcel)

	QAN Code	Distinction	Merit	Pass
Animal Care	10059696	220	196	160
Business	10056919	220	196	160
Art & Design	10057353	220	196	160
Horse Care	10058941	220	196	160
ICT Practitioners	10057857	220	196	160
Performing Arts	10057389	220	196	160
Public Services	10056646	220	196	160
Sport	10057079	220	196	160
Vehicle Technology	1005781X	220	196	160

Other BTEC (Edexcel)

	QAN Code	Distinction	Merit	Pass
Introductory Cert. in Performing Arts	10030116	68	56	38
Introductory Diploma in Performing Arts	10030128	136	112	76

Basic Skills Qualifications

	Level	QAN code	Pass
Adult Literacy	1	10013787	12.5
Adult Numeracy	1	10013210	12.5

Other Vocational Qualifications

	Level	Board	QAN Code	Distinction	Merit	Credit	Pass
Certificate in Vehicle Maintenance	1	City & Guilds	10052902	N/A	N/A	N/A	125
Certificate in Vehicle Maintenance and Repair	2	City & Guilds	10053426	N/A	N/A	N/A	230
Certificate in Business Administration	2	City & Guilds	10031017	N/A	N/A	N/A	46
Diploma in Digital Applications for IT Users	1	Edexcel	10053244	160	136	112	76
Diploma in Digital Applications for IT Users	2	Edexcel	1005327X	232	208	184	160
Certificate in Digital Applications for IT Users	1	Edexcel	10053232	80	68	56	38
Certificate in Digital Applications for IT Users	2	Edexcel	10053268	116	104	92	80
Award in Digital Applications for IT Users	1	Edexcel	10053220	40	34	28	19
Award in Digital Applications for IT Users	2	Edexcel	10053256	58	52	46	40

Welsh Baccalaureate Qualification

Points awarded will depend on the Options and Key Skills qualifications gained but the below points will be achieved for completing the core activities

	Level	Other Core Activities	Core including minimum Key Skills
Foundation	1	25	100
Intermediate	2	46	152.5
Advanced	3	63	355.5

School Census (STATS 1 Return)/ Pupil Level Annual School Census (PLASC)

PLASC (Pupil Level Annual School Census) is an electronic collection of pupil and school level data provided by all maintained sector primary, secondary, nursery and special schools in January each year.

Pupil Referral Unit data are derived from annual statistical returns (STATS1) completed by head teachers in January.

The numbers of 15 year olds used in this publication are taken from PLASC/STATS1 returns.

GLOSSARY GEIRFA

From January 1994 independent schools in Wales also complete a STATS 1 return which replaced Form 101A (school census return for independent schools prior to January 1994).

Special schools

Special schools, both day and boarding, provide education for children with special educational needs who cannot be educated satisfactorily in ordinary schools. Maintained special schools are provided and run by local education authorities. Hospital special schools provide education for children who are spending a period in hospital (some of these children may remain on the register of their usual school and therefore be counted twice, but the numbers concerned are small). In addition to special schools provision is made for pupils with special educational needs to attend special classes at maintained schools. Some independent schools also provide education wholly or mainly for such pupils. The pupils and schools involved are not included with special schools but are included with maintained or independent schools in the tables of this volume.

Subjects

The following table specifies the range of subjects included within each subject group for examinations.

Sciences

Biological Sciences :		
Biology	Biology: Human	
Design and Technology :		
Design	D and T Food Technology	D and T Systems Cont.
Design and Technology	D and T Graphic Products	D and T Textiles Technology
D and T Electronic Products	D and T Product Design	Motor Vehicle Studies
D and T Engineering	D and T Resistant Materials	
ICT (Information Communication Technology) :		
Computer Studies/Computing	Information Studies	Information Communication Technology
Home Economics :		
Home Economics: Child Development	Food	Textiles
Mathematics :		
Mathematics	Applied	Pure
Additional Mathematics	Further	Statistics
Other Science :		
Astronomy	Geology	Rural Science
Electronics	Psychology (as a science)	Science for Public Understanding
Environmental		

Social Sciences

Business Studies :		
Business Studies	Business Studies and Economics	
Geography :		
Geography	World Development	
Economics :		
Economics	Economics and Business	
Social Studies :		
Archaeology	Logic/Philosophy	Social Policy
Citizenship	Personal and Social Education	Social Science
Critical Thinking	Politics	Sociology
Law	Psychology (as a social science)	
Vocational Studies (Relates to GCSEs and A/AS levels - does not relate to GNVQs or AVCEs) :		
Accounting/Finance	Photography	Tourism
Catering Studies	Textile/Fashion Studies	Office Technology
Commerce/Office Studies		

Arts

Art and Design :		
Art Art and Design Critical Studies 3D Studies	Drawing and Fine Art History of Art Painting	Graphics Photography Textiles
Classical Studies :		
Ancient History Classical Civilisation	Greek	Latin
Communication Studies :		
Communication Studies	Film Studies	Media/Film/TV Studies
Drama :		
Drama	Expressive arts	
Music :		
Music	Music Technology	Music: Practical

Other Modern Foreign Language :

Arabic Bengali Chinese Dutch Gujarati Italian	Japanese Modern Greek Modern Hebrew Panjabi Persian	Polish Portuguese Russian Turkish Urdu
Physical Education :		
Dance	Sport/P.E. Studies	

Threshold Equivalencies

Thresholds represent a volume, or 'size' of qualifications at a specific level on the National Qualifications Framework (NQF), three thresholds have been established:

- **Level 1** – a volume of qualifications at Level 1 equivalent to the volume of 5 GCSEs at Grade D-G
- **Level 2** – a volume of qualifications at Level 2 equivalent to the volume of 5 GCSEs at Grade A*-C
- **Level 3** – a volume of qualifications at Level 3 equivalent to the volume of 2 A levels

GCSE Qualifications

	Contribution to threshold	A*	A	B	C	D	E	F	G
GCSE Short Course (All)	Level 1	10%	10%	10%	10%	10%	10%	10%	10%
	Level 2	10%	10%	10%	10%				
GCSE Full Course (All)	Level 1	20%	20%	20%	20%	20%	20%	20%	20%
	Level 2	20%	20%	20%	20%				
GCSE Double Award (All)	Level 1	40%	40%	40%	40%	40%	40%	40%	40%
	Level 2	40%	40%	40%	40%				

GNVQ Qualifications

	Contribution to threshold	Distinction	Merit	Pass
Foundation Language Unit (Welsh Second Language)	Level 1			
	Level 2	10%	10%	10%
Foundation Full (All)	Level 1			
	Level 2	80%	80%	80%
Intermediate Language Unit (Welsh Second Language)	Level 1	10%	10%	10%
	Level 2	10%	10%	10%
Intermediate Full (All)	Level 1	80%	80%	80%
	Level 2	80%	80%	80%

GLOSSARY GEIRFA

Entry Level Qualifications

No contribution to threshold.

Key Skills Qualifications

	Contribution to threshold	Pass
Key Skills Level 1	Level 1	15%
Key Skills Level 2	Level 1	15%
	Level 2	15%
Key Skills Level 3	Level 1	24%
	Level 2	24%
	Level 3	15%

NVQ Qualifications

	Level	Board	QAN Code	Contribution to threshold	Pass
Animal Care	1	NPTC	10024359	Level 1	100%
Hairdressing	1	City & Guilds	10032435	Level 1	100%
Horse Care	1	NPTC	10014093	Level 1	100%
Horticulture	1	NPTC	10023926	Level 1	120%

BTEC First Diplomas (Edexcel)

	QAN Code	Contribution to threshold	Pass
Animal Care	100/5969/6	Level 1 Level 2	80% 80%
Business	1005691/9	Level 1 Level 2	80% 80%
Art & Design	100/5735/3	Level 1 Level 2	80% 80%
Horse Care	100/5894/1	Level 1 Level 2	80% 80%
ICT Practitioners	100/5785/7	Level 1 Level 2	80% 80%
Performing Arts	100/5738/9	Level 1 Level 2	80% 80%
Public Services	100/5664/6	Level 1 Level 2	80% 80%
Sport	100/5707/9	Level 1 Level 2	80% 80%
Vehicle Technology	100/5781/X	Level 1 Level 2	80% 80%

Other BTEC (Edexcel)

	QAN Code	Contribution to threshold	Pass
Introductory Certificate in Performing Arts	10030116	Level 1	40%
Introductory Diploma in Performing Arts	10030128	Level 1	80%

Basic Skills Qualifications

	Level	Board	QAN Code	Contribution to threshold	Pass
Adult Literacy	1	Edexcel	10013787	Level 1	10%
Adult Literacy	1	City & Guilds	1001357X	Level 1	10%
Adult Numeracy	1	City & Guilds	10013210	Level 1	10%

Other vocational Qualifications

	Level	Board	QAN Code	Contribution to threshold	Dist.	Merit	Credit	Pass
Certificate in Vehicle Maintenance	1	City & Guilds	10052902	Level 1	N/A	N/A	N/A	100%
Certificate in Vehicle Maintenance and Repair	2	City & Guilds	10053426	Level 1 Level 2	N/A	N/A	N/A	100% 100%
Certificate in Business Administration	2	City & Guilds	10031017	Level 1 Level 2	N/A	N/A	N/A	20% 20%
Diploma in Digital Applications for IT Users	1	Edexcel	10053244	Level 1 Level 2	80% 80%	80%	80%	80%
Diploma in Digital Applications for IT Users	2	Edexcel	1005327X	Level 1 Level 2	80% 80%	80% 80%	80% 80%	80% 80%
Certificate in Digital Applications for IT Users	1	Edexcel	10053232	Level 1 Level 2	40% 40%	40%	40%	40%
Certificate in Digital Applications for IT Users	2	Edexcel	10053268	Level 1 Level 2	40% 40%	40% 40%	40% 40%	40% 40%
Award in Digital Applications for IT Users	1	Edexcel	10053220	Level 1 Level 2	20% 20%	20%	20%	20%
Award in Digital Applications for IT Users	2	Edexcel	10053256	Level 1 Level 2	20% 20%	20% 20%	20% 20%	20% 20%

Welsh Baccalaureate Qualification

No threshold equivalencies applied for 2007/08.

Welsh Assembly Government School Performance Information

Contains the entries and achievements in examinations of all pupils in Wales, since 1992. Every year each pupil's record is updated with results, from all the examination boards in England and Wales. The information is used to provide the data for individual school's reports to parents.

For 15-year-olds, percentage figures are based upon the pupil numbers derived from the PLASC/STATS1 return. Wales totals are based on all pupils in the relevant age group in maintained secondary and special schools and independent schools.

Year groups

The national curriculum year groups are as follows:

Form	Primary						Secondary						
	1	2	3	4	5	6	7	8	9	10	11	12	13
Year Group	1	2	3	4	5	6	7	8	9	10	11	12	13
Average age at the preceding August	5	6	7	8	9	10	11	12	13	14	15	16	17

Cwricwlwm Cenedlaethol

Yr oedd Adran 5 o Ddeddf Addysg 1996 yn gosod allan rhai egwyddorion cyffredinol ar gyfer y cwricwlwm ysgolion. Mae'r Cwricwlwm Cenedlaethol yn cynnwys yr elfennau canlynol: pynciau craidd a sylfaen y mae'n rhaid eu cynnwys yng nghwricwlwm pob disgybl, targedau cyrhaeddiad, rhaglenni astudio a threfniadau ar gyfer asesu disgyblion ar ddiwedd pob cyfnod allweddol neu tua'r diwedd.

Cyfnodau Allweddol

Defnyddir y Cwricwlwm Cenedlaethol ar 4 adeg allweddol yn natblygiad disgybl. Dyma yw'r rheiny'n fras:

	<u>Oedrannau disgyblion</u>	<u>Grwpiau blwyddyn</u>
Cyfnod Allweddol 1	5-7	1-2
Cyfnod Allweddol 2	7-11	3-6
Cyfnod Allweddol 3	11-14	7-9
Cyfnod Allweddol 4	14-16	10-11

Mae asesiad rheolaidd a threfnus o gynnydd parhaus disgybl drwy gydol y cyfnod ysgol gorfodol yn atodiad hanfodol i'r Cwricwlwm Cenedlaethol. Ei brif ddiben yw darparu darlun clir o gyrhaeddiad disgyblion yn erbyn safonau cyrhaeddiad mewn pynciau unigol erbyn diwedd tri chyfnod allweddol ym mywyd y disgybl yn yr ysgol, h.y. 7, 11 ac 14 oed yn fras. Yr oedd yr asesiadau perthnasol yn seiliedig ar raddfa esgyn (lefelau 1 i 8 ac yna Perfformiad Eithriadol) o gyrhaeddiad.

Ar gyfer plant 7 oed (Cyfnod Allweddol 1) y disgwyliad cyffredinol yw y bydd y mwyafrif o'r disgyblion yn cyrraedd Lefel 2 ym mhob pwnc unigol. Ar gyfer plant 11 oed (Cyfnod Allweddol 2) y disgwyliad yw y bydd y mwyafrif o'r disgyblion yn cyrraedd Lefel 4 ym mhob pwnc unigol. Ar gyfer plant 14 oed (Cyfnod Allweddol 3) y disgwyliad cyffredinol yw y bydd y mwyafrif o'r disgyblion yn cyrraedd Lefel 5 ym mhob pwnc unigol.

Ers 2002, asesiadau athrawon yw'r unig asesiadau statudol ar gyfer Cyfnod Allweddol 1 yng Nghymru. Yn dilyn canlyniadau Grŵp Adolygu Asesiadau Daugherty, gwnaed profi yng Nghyfnod Allweddol 2 yn opsiynol yng Nghymru yn 2005, a phrofi yng Nghyfnod Allweddol 3 yn opsiynol yng Nghymru yn 2006. Canlyniadau asesiadau athrawon yn unig a gyhoeddir o 2006 ymlaen.

Cyfrifiad Ysgolion (Ffurflen STATS 1)/ Cyfrifiad Ysgolion Blynyddol ar Lefel Disgybl (CYBLD)

Mae CYBLD (Cyfrifiad Ysgolion Blynyddol ar Lefel Disgybl) yn gasgliad data electronig o ddata lefel disgybl ac ysgol a ddarparir pob mis Ionawr gan bob ysgol gynradd, uwchradd, meithrin ac arbennig a gynhelir.

Ceir manylion am Unedau Dyfeirio Disgyblion o Ffurflenni ystadegau blynyddol (STATS1) sy'n cael eu llenwi gan benaethiaid ym mis Ionawr.

Cymerir y niferoedd o ddisgyblion 15 oed a ddefnyddir yn y cyhoeddiad hwn o CYBLD/ ffurflen STATS1.

Ers Ionawr 1994, mae ysgolion annibynnol yng Nghymru hefyd yn llenwi ffurflen STATS 1 a ddisodlodd Ffurflen 101A (ffurflen cyfrifiad ysgolion ar gyfer ysgolion annibynnol cyn Ionawr 1994).

Grwpiau blwyddyn

Dyma grwpiau blwyddyn y cwricwlwm cenedlaethol:

Dosbarth	Cynradd						Uwchradd						
	1	2	3	4	5	L6	U6
Grŵp Blwyddyn	1	2	3	4	5	6	7	8	9	10	11	12	13
Oed ar gyfartaledd yn y mis Awst blaenorol	5	6	7	8	9	10	11	12	13	14	15	16	17

Gwybodaeth Perfformiad Ysgolion Llywodraeth Cynulliad Cymru

Mae hyn yn cynnwys ceisiadau a chyraeddiadau mewn arholiadau gan holl ddisgyblion Cymru ers 1992. Bob blwyddyn caiff cofnod pob disgybl ei ddiweddarau yn ôl y canlyniadau, o'r holl fyrddau arholi yng Nghymru a Lloegr. Mae'r data yn cael eu defnyddio ar gyfer adroddiadau ysgolion unigol i rieni.

Ar gyfer plant 15 oed, mae ffigurau canran yn seiliedig ar niferoedd y disgyblion o PLASC/STATS 1. Mae cyfansymiau Cymru'n seiliedig ar yr holl ddisgyblion yn y grŵp oed perthnasol mewn ysgolion uwchradd ac arbennig a gynhelir, ac ysgolion annibynnol.

Pynciau

Mae'r tabl canlynol yn rhoi rhestr cynhwysfawr o bynciau yn gynwysiedig ymhob grŵp pynciau ar gyfer arholiadau.

Gwyddoniaeth

Gwyddorau Biolegol :		
Bioleg	Bioleg: Dyn	
Dylunio a Thechnoleg :		
Dylunio	D&T Deunyddiau Gwrthiannol	D&T Technoleg Bwyd
Dylunio A Thechnoleg	D&T Dylunio Cynnyrch	D&T Technoleg Tecstilau
D&T Cynhyrchion Electroneg	D&T Peirianeg	Astudiaethau Cerbydau Modur
D&T Cynhyrchion Graffeg	D&T Systemau A Rheoli	
TGC (Technoleg Gwybodaeth Cyfathrebu) :		
Ast. Cyfrifiadur/Cyfrifiaduron	Astudiaethau Gwybodaeth	Technoleg Gwybodaeth Cyfathrebu
Economeg Y Cartref :		
Economeg Y Cartref	Bwyd	Tecstilau
Datblygiad Plentyn		
Mathemateg :		
Mathemateg	Mathemateg Pellach	Ychwanegol
Mathemateg Cymhwysol	Pur	Ystadegaeth
Gwyddorau eraill :		
Amgylcheddol	Gwyddoniaeth ar gyfer dealltwriaeth	Seicoleg (fel gwyddoniaeth)
Daeareg	gyhoeddus	Seryddiaeth
Electroneg	Gwyddor Gwlad	

GLOSSARY GEIRFA

Gwyddorau Cymdeithasol

Astudiaethau Busnes :		
Astudiaethau Busnes	Astudiaethau Busnes Ac Economeg	
Daearyddiaeth :		
Daearyddiaeth	Datblygiad byd	
Economeg :		
Economeg	Economeg A Busnes	
Astudiaethau Cymdeithasol :		
Addysg bersonol a chymdeithasol	Gwleidyddiaeth	Polisi Gymdeithasol
Archaeoleg	Gwyddor gymdeithasol	Rhesymeg/Athroniaeth
Cymdeithaseg	Y Gyfraith	Seicoleg (fel gwyddor gymdeithasol)
Dinasyddiaeth	Meddwl Beirniadol	
Astudiaethau Galwedigaethol (Yn cyfeirio at TGAU, safon uwch/UA ac nid GNVQ ac AVCE) :		
Astudiaethau Arlwyo	Cyfrifo/Cyllid	Technoleg Swyddfa
Astudiaethau Masnach/ Swyddfa	Ffotograffiaeth	Twristiaeth
Astudiaethau Tecstilau/Ffasiwn		

Celfyddydau

Celf A Dylunio :		
Celf	Celf Gain	Hanes Celf
Celf A Dylunio	Ffotograffiaeth	Lluniadu a Pheintio
Astudiaethau beirniadol	Graffeg	Tecstilau
Astudiaethau 3D		
Astudiaethau Clasurol :		
Hanes Yr Oesoedd Cynnar	Groeg	Lladin
Gwareiddiad Y Byd Clasurol		
Astudiaethau Cyfathrebu :		
Astudiaethau Cyfathrebu	Astudiaethau Ffilm	Ast. Ffilm/Teledu/Y Cyfryngau
Drama :		
Celfyddydau Mynegiannol	Drama	
Cerddoriaeth :		
Cerddoriaeth	Technoleg Cerddoriaeth	Cerddoriaeth:Ymarferol
Ieithoedd Modern Eraill :		
Arabeg	Hebraeg Modern	Rwsieg
Bengali	Panjabi	Siapaneg
Iseldireg	Persiaidd	Sieneeg
Gujarati	Pwyleg	Twrceg
Eidaleg	Portiwgweg	Urdu
Groeg Modern		
Addysg Gorfforol :		
Dawns	Chwaraeon/Ast. Addysg Gorfforol	

Sgoriau pwyntiau

Wrth gyfrifo'r sgôr bwyntiau gyfartalog, defnyddir y sgoriau canlynol:

1. Sgôr Bwyntiau Gyfartalog Eang

Mae system sgorio pwyntiau newydd wedi'i datblygu yn ddiweddar yn Lloegr gan QCA, ac sy'n cynnwys yr holl gymwysterau a gymeradwyir yn allanol (cyn-16).

Am wybodaeth ynglyn â chymwysterau a gymeradwywyd ar gyfer disgyblion o dan 16 oed edrychwch ar restr o'r cymwysterau allanol a gymeradwywyd o dan adran 99 Deddf Dysgu a Sgiliau 2000

www.cymru.gov.uk/addysgsgiliau

Ar gyfer sgôr pwyntiau cymwysterau nad ydynt yn ymddangos yn y rhestr isod, edrychwch yn y Gronfa Ddata Cymwysterau Agored:

<http://www.openquals.org.uk>

Cymwysterau TGAU

	A*	A	B	C	D	E	F	G
Cwrs Byr TGAU (Pob un)	29	26	23	20	17	14	11	8
Cwrs Llawn TGAU (Pob un)	58	52	46	40	34	28	22	16
Dyfarniad Dwbl TGAU (Pob un)	116	104	92	80	68	56	44	32

Cymwysterau GNVQ

	Rhagoriaeth	Teilyngdod	Llwyddo
Uned Iaith Sylfaen (Cymraeg Ail Iaith)	17	14	9.5
Sylfaen Rhan 1 (Pob cwrs)	68	56	38
Sylfaen Llawn (Pob cwrs)	136	112	76
Uned Iaith Ganolradd (Cymraeg Ail Iaith)	27.5	24.5	20
Canolradd Rhan 1 (Pob cwrs)	110	98	80
Canolradd Llawn (Pob cwrs)	220	196	160

Cymwysterau Lefel Mynediad

	Rhagoriaeth	Teilyngdod	Llwyddo
Cymhwyster Lefel Mynediad mewn Pwnc sy'n rhan o'r Cwricwlwm Cenedlaethol	14	12	10

Cymwysterau Sgiliau Allweddol

	Llwyddo
Lefel 1	18.75
Lefel 2	34.5

Cymwysterau NVQ

	Lefel	Cod QAN	Llwyddo
Gofal Anifeiliaid	1	10024359	140
Trin Gwallt	1	10032435	140
Garddwriaeth	1	10023926	168

Diplomâu BTEC Cyntaf (Edexcel)

	Cod QAN	Rhagoriaeth	Teilyngdod	Llwyddo
Gofal Anifeiliaid	100/5969/6	220	196	160
Busnes	100/5691/9	220	196	160
Celf a Dylunio	100/5735/3	220	196	160
Gofal Ceffylau	100/5894/1	220	196	160
Ymarferwyr TGC	100/5785/7	220	196	160
Y Celfyddydau Perfformiadol	100/5738/9	220	196	160
Gwasanaethau Cyhoeddus	100/5664/6	220	196	160
Chwaraeon	100/5707/9	220	196	160
Thechnoleg Cerbydau	100/5781/X	220	196	160

GLOSSARY GEIRFA

Cyrsiau BTEC eraill (Edexcel)

	Cod QAN	Rhagoriaeth	Teilyngdod	Llwyddo
Tystysgrif Ragarweiniol yn y Celfyddydau Perfformiadol	10030116	68	56	38
Diploma Ragarweiniol yn y Celfyddydau Perfformiadol	10030128	136	112	76

Cymhwysterau Sgiliau Syflaenol

	Lefel	Cod QAN	Llwyddo
Llythrennedd Oedolion	1	10013787	12.5
Rhifedd Oedolion	1	10013210	12.5

Cymhwysterau galwedigaethol eraill

	Lefel	Bwrdd	Cod QAN	Rhagoriaeth	Teilyng	Credyd	Llwydd
Tystysgrif mewn Cynnal ac Atgyweirio Ceir	1	City & Guilds	10052902	N/A	N/A	N/A	N/A
Tystysgrif mewn Cynnal ac Atgyweirio Ceir	2	City & Guilds	10053426	N/A	N/A	N/A	N/A
Tystysgrif mewn Gweinyddiaeth Busnes	2	City & Guilds	10031017	N/A	N/A	N/A	N/A
Diploma mewn Cymwysiadau Digidol i ddefnyddwyr TG	1	Edexcel	10053244	160	136	112	160
Diploma mewn Cymwysiadau Digidol i ddefnyddwyr TG	2	Edexcel	1005327X	232	208	184	232
Tystysgrif mewn Cymwysiadau Digidol i ddefnyddwyr TG	1	Edexcel	10053232	80	68	56	80
Tystysgrif mewn Cymwysiadau Digidol i ddefnyddwyr TG	2	Edexcel	10053268	116	104	92	116
Gwobr mewn Cymwysiadau Digidol i ddefnyddwyr TG	1	Edexcel	10053220	40	34	28	40
Gwobr mewn Cymwysiadau Digidol i ddefnyddwyr TG	2	Edexcel	10053256	58	52	46	58

Y Bagoloriaeth Cymraeg

Mi fydd cyfanswm y pwyntiau yn dibynnu ar yr Opsiynau a'r cymhwysterau Sgiliau Allweddol ond cyflawnir pwyntiau trwy gwblhau yr gweithgareddau craidd.

	Lefel	Gweithgareddau Craidd Arall	Craidd gan gynnwys isafrif Sgiliau Allweddol
Sylfaenol	1	25	100
Canolradd	2	46	152.5
Uwch	3	63	355.5

Cyfartaleddau Trothwy

Mae cyfartaleddau trothwy yn dynodi cyfaint, neu “maint” y cymhwyster at lefel penodol y Fframwaith Cymhwysterau Cenedlaethol (NQF). Mae tri cyfartaledd wedi'u sefydlu:

- **Lefel 1** – cyfaint o gymhwysterau Lefel 1 yn gyfartal i 5 TGAU gradd D-GLefel
- **Lefel 2** – cyfaint o gymhwysterau Lefel 2 yn gyfartal i 5 TGAU gradd A*-CLefel
- **Lefel 3** – cyfaint o gymhwysterau Lefel 3 yn gyfartal i 2 lefel A

Cymhwysterau TGAU

	Cyfraniad i'r trothwy	A*	A	B	C	D	E	F	G
TGAU cwrs byr (pob)	Lefel 1 Lefel 2	10% 10%	10% 10%	10% 10%	10% 10%	10% 10%	10% 10%	10% 10%	10% 10%
TGAU cwrs llawn (pob)	Lefel 1 Lefel 2	20% 20%	20% 20%	20% 20%	20% 20%	20% 20%	20% 20%	20% 20%	20% 20%
Cwrs TGAU Dwbl (pob)	Lefel 1 Lefel 2	40% 40%	40% 40%	40% 40%	40% 40%	40% 40%	40% 40%	40% 40%	40% 40%

Cymhwysterau GNVQ

	Cyfraniad i'r trothwy	Rhagoriaeth	Teilyngd od	Pasio
Uned Iaith Sylfaenol (Cymraeg Ail iaith)	Lefel 1 Lefel 2	10%	10%	10%
GNVQ Sylfaenol Llawn (pobl)	Lefel 1 Lefel 2	80%	80%	80%
Uned Iaith Canolradd (Cymraeg Ail iaith)	Lefel 1 Lefel 2	10% 10%	10% 10%	10% 10%
GNVQ Canolradd Llawn (pobl)	Lefel 1 Lefel 2	80% 80%	80% 80%	80% 80%

Cymhwysterau lefel Mynediad

Dim cyfraniad i'r trothwy.

Cymhwysterau Sgiliau Allweddol

	Cyfraniad i'r trothwy	Pasio
LefelSgiliau Allweddol Lefel 1	Lefel 1	15%
LefelSgiliau Allweddol Lefel 2	Lefel 1 Lefel 2	15% 15%
LefelSgiliau Allweddol Lefel 3	Lefel 1 Lefel 2 Lefel 3	24% 24% 15%

Cymhwysterau NVQ

	Lefel	Bwrdd	Cod QAN	Cyfraniad i'r trothwy	Pasio
Gofal Anifeiliaid	1	NPTC	10024359	Lefel 1	100%
Trin Gwallt	1	City & Guilds	10032435	Lefel 1	100%
Gofal Ceffylau	1	NPTC	10014093	Lefel 1	100%
Garddwriaeth	1	NPTC	10023926	Lefel 1	120%

GLOSSARY GEIRFA

Diplomas Cyntaf BTEC (Edexcel)

	Cod QAN	Cyfraniad i'r trothwy	Pasio
Gofal Anifeiliaid	100/5969/6	Lefel 1 Lefel 2	80% 80%
Busnes	100/5691/9	Lefel 1 Lefel 2	80% 80%
Celf a Dylunio	100/5735/3	Lefel 1 Lefel 2	80% 80%
Gofal Ceffylau	100/5894/1	Lefel 1 Lefel 2	80% 80%
Ymarferwyr TGC	100/5785/7	Lefel 1 Lefel 2	80% 80%
Y Celfyddydau Perfformiadol	100/5738/9	Lefel 1 Lefel 2	80% 80%
Gwasanaethau Cyhoeddus	100/5664/6	Lefel 1 Lefel 2	80% 80%
Chwaraeon	100/5707/9	Lefel 1 Lefel 2	80% 80%
Technoleg Cerbydau	100/5781/X	Lefel 1 Lefel 2	80% 80%

BTEC arall (Edexcel)

	Cod AQN	Cyfraniad i'r trothwy	Pasio
Tystysgrif Ragarweiniol yn y Celfyddydau Perfformiadol	10030116	Lefel 1	40%
Diploma Ragarweiniol yn y Celfyddydau Perfformiadol	10030128	Lefel 1	80%

Cymhwysterau Sgiliau Sylfaenol

	Lefel	Bwrdd	Cod QAN	Cyfraniad i'r trothwy	Pasio
Llythrennedd Oedolion	1	Edexcel	10013787	Lefel 1	10%
Llythrennedd Oedolion	1	City & Guilds	1001357X	Lefel 1	10%
Rhifedd Oedolion	1	City & Guilds	10013210	Lefel 1	10%

Cymhwysterau Galwedigaethol Arall

	Lefel	Bwrdd	Cod QAN	Cyfraniad i'r trothwy	Rhag	Teil	Credyd	Pasio
Tystysgrif mewn Cynnal ac Atgyweirio Ceir	1	City & Guilds	10052902	Lefel 1	N/A	N/A	N/A	100%
Tystysgrif mewn Cynnal ac Atgyweirio Ceir	2	City & Guilds	10053426	Lefel 1 Lefel 2	N/A	N/A	N/A	100% 100%
Tystysgrif mewn Gweinyddiaeth Busnes	2	City & Guilds	10031017	Lefel 1 Lefel 2	N/A	N/A	N/A	20% 20%
Diploma mewn Cymwysiadau Digidol i ddefnyddwyr TG	1	Edexcel	10053244	Lefel 1 Lefel 2	80% 80%	80%	80%	80%
Diploma mewn Cymwysiadau Digidol i ddefnyddwyr TG	2	Edexcel	1005327X	Lefel 1 Lefel 2	80% 80%	80% 80%	80% 80%	80% 80%
Tystysgrif mewn Cymwysiadau Digidol i ddefnyddwyr TG	1	Edexcel	10053232	Lefel 1 Lefel 2	40% 40%	40%	40%	40%
Tystysgrif mewn Cymwysiadau Digidol i ddefnyddwyr TG	2	Edexcel	10053268	Lefel 1 Lefel 2	40% 40%	40% 40%	40% 40%	40% 40%
Gwobr mewn Cymwysiadau Digidol i ddefnyddwyr TG	1	Edexcel	10053220	Lefel 1 Lefel 2	20% 20%	20%	20%	20%
Gwobr mewn Cymwysiadau Digidol i ddefnyddwyr TG	2	Edexcel	10053256	Lefel 1 Lefel 2	20% 20%	20% 20%	20% 20%	20% 20%

Y Bagoloriaeth Cymraeg

Nid oes dim cyfraniad i'r trothwy ar gyfer 2007/08.

Ysgolion a gynhelir

Ysgolion a gynhelir gan yr awdurdodau addysg lleol gan gynnwys ysgolion arbennig. Bydd yr awdurdodau'n talu eu costau'n rhannol o'r trethi lleol ac yn rhannol o grantiau cyffredinol gan Lywodraeth Cynulliad Cymru.

Ysgolion annibynnol

Ysgolion sy'n codi ffioedd ac a all gael eu hariannu hefyd gan unigolion, cwmnïau neu sefydliadau elusennol. Rhaid i bob ysgol annibynnol yng Nghymru gofrestru gyda Llywodraeth Cynulliad Cymru.

Ysgolion arbennig

Ysgolion arbennig, rhai dydd a rhai preswyl, sy'n darparu addysg i blant ag anghenion addysgol arbennig na allant gael eu haddysgu'n foddhaol mewn ysgolion cyffredin. Caiff ysgolion arbennig a gynhelir eu darparu a'u rhedeg gan awdurdodau addysg lleol. Bydd ysgolion arbennig mewn ysbytai yn darparu addysg i blant sy'n treulio cyfnod yn yr ysbyty (gall rhai o'r plant hyn barhau ar gofrestr ei hysgol arferol a chael eu cyfrif ddwywaith o'r herwydd, ond mae'r niferoedd dan sylw'n fach). Yn ogystal ag ysgolion arbennig, darperir ar gyfer disgyblion ag anghenion addysgol arbennig iddynt gael mynychu dosbarthiadau arbennig mewn ysgolion a gynhelir. Mae rhai ysgolion annibynnol hefyd yn darparu addysg yn gyfangwbl neu'n bennaf ar gyfer disgyblion felly. Ni chynhwysir y disgyblion na'r ysgolion dan sylw gydag ysgolion arbennig ond cânt eu cynnwys gydag ysgolion a gynhelir neu ysgolion annibynnol yn nhablau'r gyfrol hon.